

\$289,998 - 203, 25 Beju Industrial Drive, Sylvan Lake

MLS® #A2233904

\$289,998

0 Bedroom, 0.00 Bathroom,
Commercial on 0.00 Acres

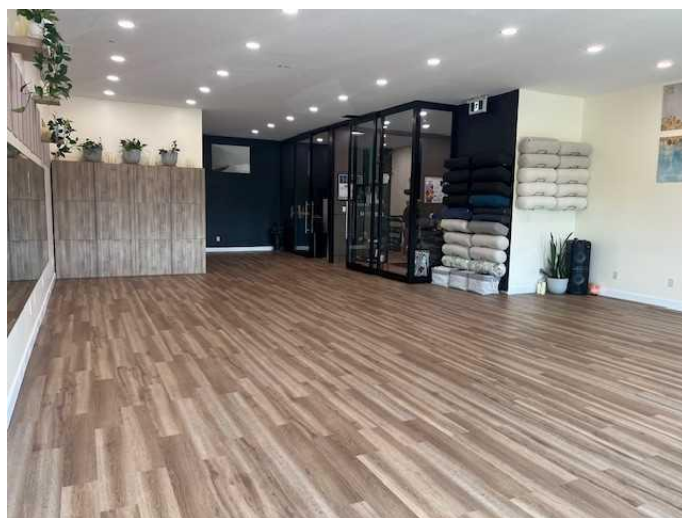
Beju Industrial Park, Sylvan Lake, Alberta

COMMERCIAL SPACE IN HIGH TRAFFIC AREA - SURROUNDED BY BIG BOX STORES - WALMART, CDN TIRE, BOSTON PIZZA! Investor's and Commercial Buyer's, here is an opportunity to own a great, safe investment. Currently set up as a Yoga Studio and could be easily converted into office space or other uses. This 1364 sqft unit in a prime highway commercial zoned building surrounded by Canadian Tire, Walmart, BP's, Tim Horton's, A&W, Industrial Park of various oil & gas companies, and new residential developments. Great ROI and super location with over 13,000 vehicles passing by every single day with huge exposure. 10' ceilings with seperate entrance & utilities. Excellent natural light and large commercial windows. High quality commercial flooring, drop ceiling, utility room and bathroom complete. Great signage on building and also on large pilon sign. Tons of parking with extra in the rear.

Built in 2014

Essential Information

MLS® #	A2233904
Price	\$289,998
Bathrooms	0.00
Acres	0.00
Year Built	2014
Type	Commercial
Sub-Type	Mixed Use



Status Active

Community Information

Address 203, 25 Beju Industrial Drive
Subdivision Beju Industrial Park
City Sylvan Lake
County Red Deer County
Province Alberta
Postal Code T4S 0B6

Additional Information

Date Listed June 25th, 2025
Days on Market 3
Zoning CH

Listing Details

Listing Office RE/MAX real estate central alberta

Data is supplied by Pillar 9â„¢ MLS® System. Pillar 9â„¢ is the owner of the copyright in its MLS® System. Data is deemed reliable but is not guaranteed accurate by Pillar 9â„¢. The trademarks MLS®, Multiple Listing Service® and the associated logos are owned by The Canadian Real Estate Association (CREA) and identify the quality of services provided by real estate professionals who are members of CREA. Used under license.