

\$79,900 - 30 Timber Drive, 5230 27 Highway, Rural Mountain View County

MLS® #A2233513

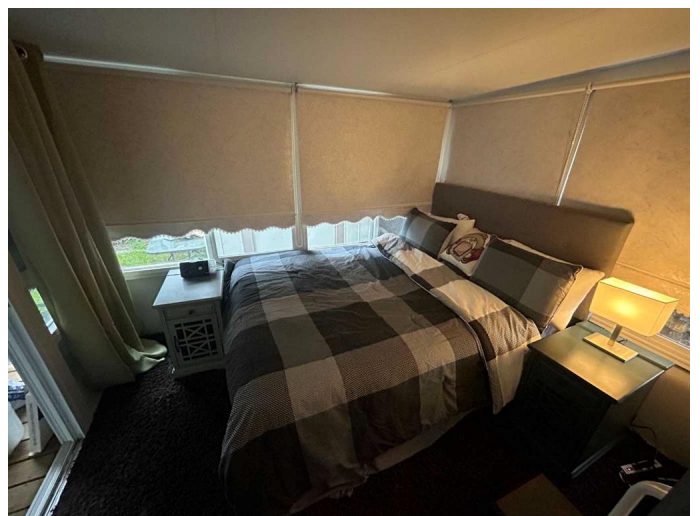
\$79,900

0 Bedroom, 0.00 Bathroom,
Land on 0.07 Acres

Tall Timber, Rural Mountain View County,
Alberta

Enjoy owning your own lot at Tall Timber Leisure Park! Always have a weekend getaway guaranteed. No rush to book a campsite. Lots of activities/amenities for the kids. This lot is on the North side of Tall Timber. RV is a 2003 DUTCHMEN SPORT and features a COVERED DECK and an ADDITION. This adds tons of space and is currently used as the primary bedroom with standard queen bed with patio doors that open to the covered deck. At the front is a standard RV queen bedroom. Slide for the couch/living room (seal needs repair on slide) with TV across. Good sized dining and large kitchen. Inside has been updated with paint/new backsplash etc. 3 pc bathroom and BUNK HOUSE in the back. Bunkhouse has its own separate door (goes into the addition) SINGLE parking pad, mature TREES for some privacy, and it's close to RIVER ACCESS. Outside you will find the expansive covered deck, TIN SHED, small GARDEN and FIREPIT AREA.

All of this is only one hour from Calgary. Tall Timber is on the East side of Sundre and close to many other amenities - shopping, restaurants, grocery, 3 great golf courses and the west country. Tall Timber Leisure park has some of the best amenities around! INDOOR POOL, hot tub, community centre, 2 playgrounds, volleyball court,



basketball/pickleball courts, horseshoe pits, ball diamond, bocce ball lanes, & disc golf. Coin laundry and shower facilities on site along with boat/ATV storage. Seasonal living & utilities but swipe card access is year round. Your annual condo fee includes water, power, sewer services, garbage as well as unlimited use of the amenities. There is also a SOCIAL COMMITTEE that hosts several great EVENTS THROUGHOUT THE SUMMER.

Essential Information

MLS® #	A2233513
Price	\$79,900
Bathrooms	0.00
Acres	0.07
Type	Land
Sub-Type	Recreational
Status	Active

Community Information

Address	30 Timber Drive, 5230 27 Highway
Subdivision	Tall Timber
City	Rural Mountain View County
County	Mountain View County
Province	Alberta
Postal Code	T0M1X0

Amenities

Amenities	Indoor Pool, Laundry, Playground, Racquet Courts, Visitor Parking, Gazebo, Pool, RV/Boat Storage
Utilities	Electricity Available, Sewer Available, Water Available

Exterior

Exterior Features	Awning(s), Fire Pit
-------------------	---------------------

Additional Information

Date Listed	June 22nd, 2025
Days on Market	5

Zoning P-PCR

Listing Details

Listing Office RE/MAX real estate central alberta

Data is supplied by Pillar 9â„¢ MLS® System. Pillar 9â„¢ is the owner of the copyright in its MLS® System. Data is deemed reliable but is not guaranteed accurate by Pillar 9â„¢. The trademarks MLS®, Multiple Listing Service® and the associated logos are owned by The Canadian Real Estate Association (CREA) and identify the quality of services provided by real estate professionals who are members of CREA. Used under license.