

\$6 - Unit 9, 4720 50 Street, Lloydminster

MLS® #A2232557

\$6

0 Bedroom, 0.00 Bathroom,
Commercial on 0.00 Acres

East Lloydminster, Lloydminster, Alberta

Warehouse Bay with Raised Loading Dock â€“
1,625 SQ.FT.

Now available for lease: a clean and functional 1,625 square foot warehouse bay (65â€™™ x 25â€™™) featuring a raised loading dock door, ideal for efficient loading and unloading of large equipment or inventory. This unit includes a half bathroom and offers excellent potential for cold storage, woodworking, or general equipment and inventory storage.

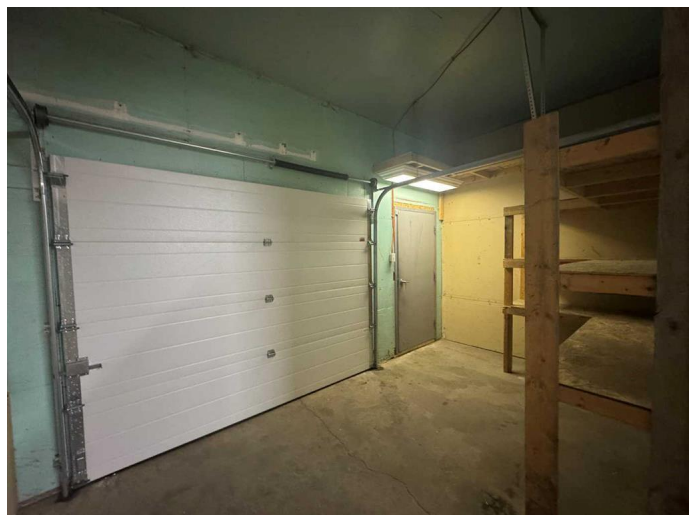
The space is well-suited for businesses in need of additional storage or operational space. Electric heat can be installed based on tenant requirements. With clear dimensions and easy access, this bay provides a practical solution for a wide range of commercial uses.

Contact for further details or to arrange a viewing.

Built in 1967

Essential Information

MLS® #	A2232557
Price	\$6
Bathrooms	0.00
Acres	0.00
Year Built	1967
Type	Commercial
Sub-Type	Mixed Use



Status Active

Community Information

Address Unit 9, 4720 50 Street
Subdivision East Lloydminster
City Lloydminster
County Lloydminster
Province Alberta
Postal Code S9V 0M7

Interior

Heating Natural Gas, Radiant, Overhead Heater(s)
Cooling None

Additional Information

Date Listed June 18th, 2025
Days on Market 10

Listing Details

Listing Office MUSGRAVE AGENCIES

Data is supplied by Pillar 9â„¢ MLS® System. Pillar 9â„¢ is the owner of the copyright in its MLS® System. Data is deemed reliable but is not guaranteed accurate by Pillar 9â„¢. The trademarks MLS®, Multiple Listing Service® and the associated logos are owned by The Canadian Real Estate Association (CREA) and identify the quality of services provided by real estate professionals who are members of CREA. Used under license.