

\$1,650,000 - 737 2 Avenue Nw, Calgary

MLS® #A2230047

\$1,650,000

0 Bedroom, 0.00 Bathroom,
Land on 0.17 Acres

Sunnyside, Calgary, Alberta

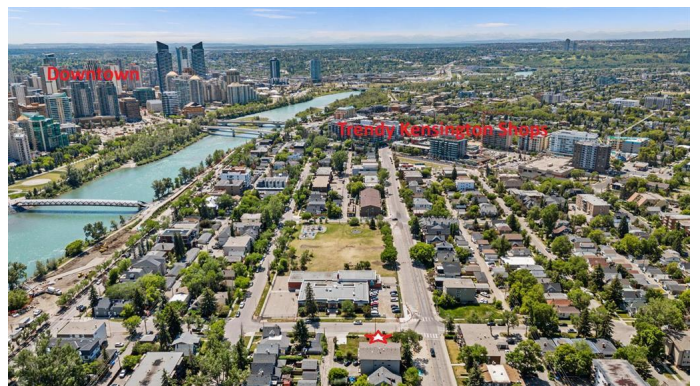
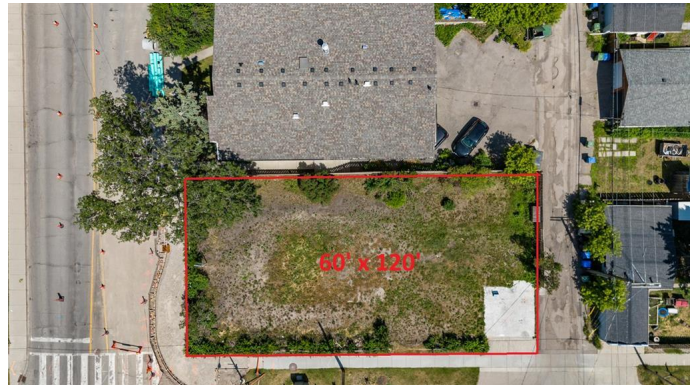
Welcome to this incredible 60 ft x 120 ft corner development lot – An Ideal Investment in the vibrant community of Sunnyside – an exceptional opportunity to bring your vision to life. This prime location offers stunning downtown views and is perfectly positioned near the LRT, downtown core, and the lively amenities of Kensington. With Memorial Drive pathways right at your doorstep, the possibilities for development are vast. Whether you're looking to build your dream home or create a unique project, this lot provides the ideal setting to make your mark in one of Calgary's most sought-after neighbourhoods. Don't miss the chance to add your personal touch to the charm and character of Sunnyside.

Essential Information

| | |
|-----------|------------------|
| MLS® # | A2230047 |
| Price | \$1,650,000 |
| Bathrooms | 0.00 |
| Acres | 0.17 |
| Type | Land |
| Sub-Type | Residential Land |
| Status | Active |

Community Information

| | |
|-------------|-----------------|
| Address | 737 2 Avenue Nw |
| Subdivision | Sunnyside |



| | |
|-------------|---------|
| City | Calgary |
| County | Calgary |
| Province | Alberta |
| Postal Code | T2N 0E4 |

Exterior

| | |
|-----------------|--|
| Lot Description | Back Lane, Corner Lot, Level, Near Public Transit, Rectangular Lot |
|-----------------|--|

Additional Information

| | |
|----------------|-----------------|
| Date Listed | June 12th, 2025 |
| Days on Market | 31 |
| Zoning | M-CG d72 |

Listing Details

| | |
|----------------|------------|
| Listing Office | CIR Realty |
|----------------|------------|

Data is supplied by Pillar 9â„¢ MLS® System. Pillar 9â„¢ is the owner of the copyright in its MLS® System. Data is deemed reliable but is not guaranteed accurate by Pillar 9â„¢. The trademarks MLS®, Multiple Listing Service® and the associated logos are owned by The Canadian Real Estate Association (CREA) and identify the quality of services provided by real estate professionals who are members of CREA. Used under license.