

# \$729,900 - 588 Rowmont Boulevard Nw, Calgary

MLS® #A2229492

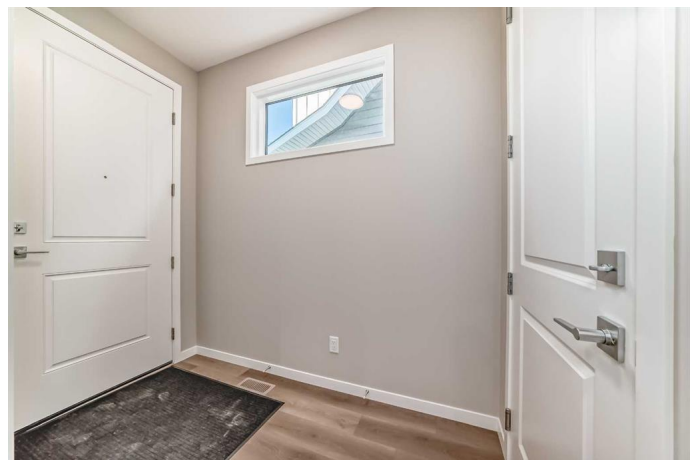
**\$729,900**

5 Bedroom, 4.00 Bathroom, 1,826 sqft  
Residential on 0.06 Acres

Haskayne, Calgary, Alberta

## IMMEDIATE POSSESSION AVAILABLE |

Step into lifestyle living in Rockland Park, Calgary's newest NW gem. This Columbia 18 model by Cedarglen Homes is thoughtfully crafted for families, investors, or anyone seeking a home that blends elevated finishes with practical design—just minutes to pathways, playgrounds, and the Bow River Valley. The main floor welcomes you with bright, natural light and a seamless open-concept layout. At the heart of the home is a stunning kitchen featuring warm wood-tone cabinetry, sleek quartz countertops, and a designer tile backsplash. The oversized island provides plenty of prep space and seating for entertaining or busy mornings. With a \$9,000 appliance allowance, you can customize the kitchen to suit your style and needs. Just off the kitchen, the great room flows effortlessly into the dining area, creating a spacious setting for everyday living or weekend get-togethers. A front-facing flex room adds function to the main level—perfect for a home office, creative zone, or play space. Upstairs, a central bonus room creates separation between the three bedrooms while offering a cozy space for family movie nights or quiet reading time. The spacious primary retreat includes a beautifully appointed ensuite with dual vanities, a walk-in shower, and a generous walk-in closet. Two additional bedrooms, a stylish main bath, and a dedicated laundry room complete the upper floor with comfort and convenience. The lower



level features a fully legal 2-bedroom basement suite with a separate entrance, its own kitchen, laundry, living area, and 4-piece bathroomâ€”perfect for multi-generational living or as a mortgage helper. Enjoy summer evenings on your finished deck with built-in gas line and plan your dream yard with the included \$2,000 landscaping rebate. Set in one of Calgaryâ€™s most desirable new communities, Rockland Park offers residents access to a future Homeownersâ€™ Association facility with a splash park, outdoor pool, and year-round amenities. The community also boasts future schools, shopping, transit access, and beautiful natural surroundingsâ€”all just minutes from Stoney Trail and Crowchild Trail. This home isnâ€™t just move-in readyâ€”itâ€™s lifestyle ready. Donâ€™t miss your chance to call Rockland Park home.

Built in 2024

**Essential Information**

MLS® #	A2229492
Price	\$729,900
Bedrooms	5
Bathrooms	4.00
Full Baths	3
Half Baths	1
Square Footage	1,826
Acres	0.06
Year Built	2024
Type	Residential
Sub-Type	Semi Detached
Style	2 Storey, Side by Side
Status	Active

**Community Information**

Address	588 Rowmont Boulevard Nw
Subdivision	Haskayne

City	Calgary
County	Calgary
Province	Alberta
Postal Code	T3L 0L6

### Amenities

Amenities	Clubhouse, Recreation Facilities, Outdoor Pool
Parking Spaces	2
Parking	Alley Access, Off Street, Parking Pad

### Interior

Interior Features	Double Vanity, Kitchen Island, No Animal Home, No Smoking Home, Open Floorplan, Pantry, Quartz Counters, Separate Entrance, Walk-In Closet(s)
Appliances	See Remarks
Heating	High Efficiency, Forced Air
Cooling	None
Has Basement	Yes
Basement	Exterior Entry, Finished, Full, Suite

### Exterior

Exterior Features	BBQ gas line
Lot Description	Back Lane, Back Yard, Rectangular Lot
Roof	Asphalt Shingle
Construction	Cement Fiber Board, Composite Siding
Foundation	Poured Concrete

### Additional Information

Date Listed	June 10th, 2025
Days on Market	6
Zoning	R-Gm
HOA Fees	600
HOA Fees Freq.	ANN

### Listing Details

Listing Office	Royal LePage Benchmark
----------------	------------------------

Data is supplied by Pillar 9â„¢ MLS® System. Pillar 9â„¢ is the owner of the copyright in its MLS® System. Data is deemed reliable but is not guaranteed accurate by Pillar 9â„¢. The trademarks MLS®, Multiple Listing Service® and the associated logos are owned by The Canadian Real Estate Association (CREA) and identify the quality of services provided by real estate professionals who are members of CREA. Used under license.