

# \$22 - 2-6361 Township Road 695a, Grovedale

MLS® #A2227481

**\$22**

0 Bedroom, 0.00 Bathroom,  
Commercial on 13.42 Acres

NONE, Grovedale, Alberta

This 12,000 sq.ft. space, part of a fully demised duplex property, features three 120-foot pull-through bays with six 18'™H x 14'™W overhead doors, situated on a shared 13.42-acre fenced and graveled lot in Grovedale, directly across from the Firehall. The property includes a 5-ton overhead crane, eight offices, a reception area, a boardroom, and negotiated access to a wash bay. Ideal for businesses operating on the south side of Grande Prairie, this well-equipped and rare find presents an exceptional leasing opportunity. Contact your local Commercial Realtor® today for more information or to arrange a tour.

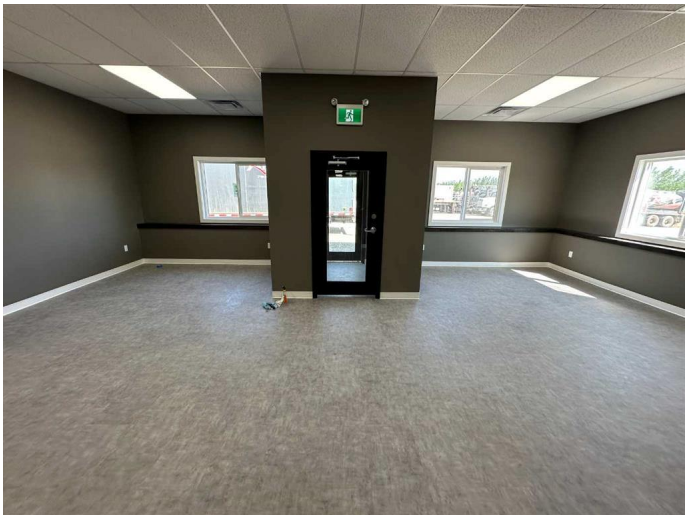
Built in 2025

## Essential Information

MLS® #	A2227481
Price	\$22
Bathrooms	0.00
Acres	13.42
Year Built	2025
Type	Commercial
Sub-Type	Industrial
Status	Active

## Community Information

Address	2-6361 Township Road 695a
Subdivision	NONE



City	Grovedale
County	Greenview No. 16, M.D. of
Province	Alberta
Postal Code	T0H 3N0

### **Exterior**

Construction	Wood Frame
--------------	------------

### **Additional Information**

Date Listed	June 17th, 2025
Days on Market	11
Zoning	M-1

### **Listing Details**

Listing Office	RE/MAX Grande Prairie
----------------	-----------------------

Data is supplied by Pillar 9â„¢ MLS® System. Pillar 9â„¢ is the owner of the copyright in its MLS® System. Data is deemed reliable but is not guaranteed accurate by Pillar 9â„¢. The trademarks MLS®, Multiple Listing Service® and the associated logos are owned by The Canadian Real Estate Association (CREA) and identify the quality of services provided by real estate professionals who are members of CREA. Used under license.