

\$699,900 - 103, 5210 Lakeshore Drive, Sylvan Lake

MLS® #A2226059

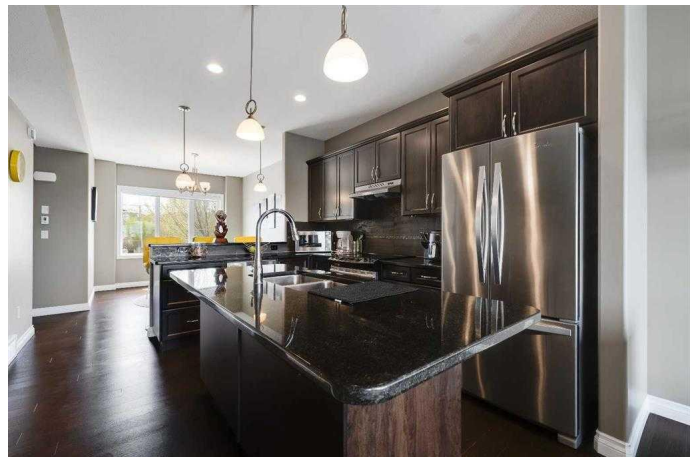
\$699,900

2 Bedroom, 3.00 Bathroom, 1,272 sqft

Residential on 0.03 Acres

Downtown, Sylvan Lake, Alberta

Offering stunning views of the lake, marina and light house, this executive style town house is perfect for someone wanting a carefree lifestyle with an active living. A secure gated style community offers comfort and assurance while your home and even away. Large heated tandem style garage will easily fit two vehicles or even the lake toys for vehicle protection and added security. The open main level design allows plenty of natural light to cascade in from the front to back windows. Spacious kitchen boasts full granite surround counters, center island with under mount sink, all matching stainless steel appliances plus plenty of rich stained maple cabinets. The inviting dining area not only offers an intimate candlelit space for two but can even extend out offering more room for guests plus seating at the eating bar as well. Enjoy the comfortable living space with large picture window plus direct garden door access out the private deck overlooking the water. Privacy glass between neighbors plus a gas line for bbq. Head to the upper level to the gorgeous Primary bedroom with a cascading view as well. Your own private three piece en suite plus a deep walk in closet for all your seasonal clothing. An additional guest bedroom, full four piece bath plus the added bonus of a studio room which could easily be home office, guest room or even study. This unit even comes furnished if you are looking to make it a turn key investment property. Low monthly condo fees cover all your exterior maintenance so



you are free to enjoy the lake life to its fullest or lock and walk while you Snowbird away down south. Located in the heart of the scene you are walking distance to the beach, restaurants, shopping plus all of the seasonal activities whether its boating, biking, fishing, swimming or ice skating. This lakeside property offers the best of all world whether its personal, vacation or even investment why not benefit from one of them.

Built in 2014

Essential Information

MLS® #	A2226059
Price	\$699,900
Bedrooms	2
Bathrooms	3.00
Full Baths	2
Half Baths	1
Square Footage	1,272
Acres	0.03
Year Built	2014
Type	Residential
Sub-Type	Row/Townhouse
Style	3 Storey
Status	Active

Community Information

Address	103, 5210 Lakeshore Drive
Subdivision	Downtown
City	Sylvan Lake
County	Red Deer County
Province	Alberta
Postal Code	T4S0M6

Amenities

Amenities	Beach Access, Park, Secured Parking, Boating
Parking Spaces	2

Parking	Double Garage Attached, Garage Door Opener, Heated Garage, Tandem
# of Garages	2

Interior

Interior Features	Granite Counters, Kitchen Island, Open Floorplan, Vinyl Windows, Walk-In Closet(s)
Appliances	Dishwasher, Refrigerator, Stove(s), Washer/Dryer
Heating	Forced Air
Cooling	None
Basement	None

Exterior

Exterior Features	Private Entrance
Lot Description	Lake, Beach
Roof	Asphalt Shingle
Construction	Stone, Wood Frame
Foundation	Poured Concrete

Additional Information

Date Listed	June 5th, 2025
Days on Market	10
Zoning	LDC

Listing Details

Listing Office	RE/MAX real estate central alberta
----------------	------------------------------------

Data is supplied by Pillar 9â„¢ MLS® System. Pillar 9â„¢ is the owner of the copyright in its MLS® System. Data is deemed reliable but is not guaranteed accurate by Pillar 9â„¢. The trademarks MLS®, Multiple Listing Service® and the associated logos are owned by The Canadian Real Estate Association (CREA) and identify the quality of services provided by real estate professionals who are members of CREA. Used under license.