

\$2,200,000 - 250044 Range Road 32, Rural Rocky View County

MLS® #A2225415

\$2,200,000

7 Bedroom, 8.00 Bathroom, 4,116 sqft
Residential on 3.62 Acres

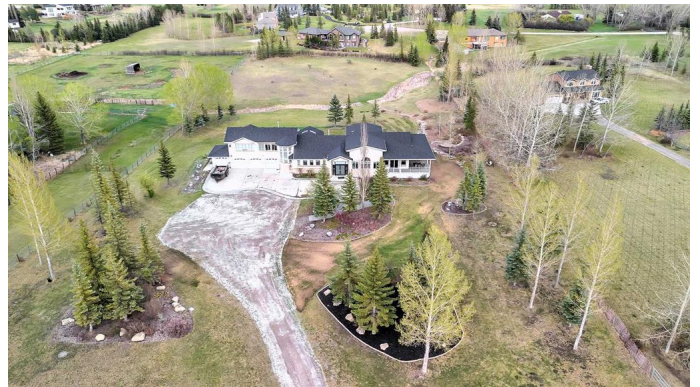
Crocus Ridge Estates, Rural Rocky View County, Alberta

Unparalleled luxury in prestigious Springbank! This stunning 7-bed, 8-bath estate home offers over 6900 sf of living space and sits on 3.6 acres and blends timeless elegance with modern comfort. Originally built in 1996 and fully rebuilt in 2010, this 1.5-storey home features 14â€™™ cove-vaulted ceilings, site-finished Brazilian cherry hardwood, and exquisite craftsmanship throughout.

The main-floor primary suite is a private retreat with a spa-inspired ensuite, deep soaker tub, oversized shower, dual vanities, and a massive custom walk-in closet. The chefâ€™™s kitchen boasts high-end appliances, custom cabinetry, and a large island that flows into a sunlit great room with floor-to-ceiling windows and serene views.

The fully developed walkout basement offers 2 bedrooms, a gym, wet bar, entertainment areas, and potential for a wine room. Easily suiteable, itâ€™™s perfect for multi-generational living or added rental income.

Car enthusiasts will love the 4-car attached garage plus 2-car tandem garage/workshop. Zoned for 2 horses and permitted 2040 sq ft of outbuildings, this property is ideal for equestrian use, a hobby farm, or additional development.



A rare opportunity to own a luxurious estate just minutes from the city. Book your private showing today!

Built in 1997

Essential Information

| | |
|----------------|---|
| MLS® # | A2225415 |
| Price | \$2,200,000 |
| Bedrooms | 7 |
| Bathrooms | 8.00 |
| Full Baths | 6 |
| Half Baths | 2 |
| Square Footage | 4,116 |
| Acres | 3.62 |
| Year Built | 1997 |
| Type | Residential |
| Sub-Type | Detached |
| Style | Acreage with Residence, 1 and Half Storey |
| Status | Active |

Community Information

| | |
|-------------|-------------------------|
| Address | 250044 Range Road 32 |
| Subdivision | Crocus Ridge Estates |
| City | Rural Rocky View County |
| County | Rocky View County |
| Province | Alberta |
| Postal Code | T3Z1G6 |

Amenities

| | |
|----------------|--|
| Parking Spaces | 6 |
| Parking | Single Garage Attached, Triple Garage Attached |
| # of Garages | 6 |

Interior

| | |
|-------------------|---|
| Interior Features | Central Vacuum, Double Vanity, Granite Counters, High Ceilings, Kitchen Island, Open Floorplan, Recessed Lighting, See Remarks, Separate Entrance, Storage, Vaulted Ceiling(s), Wet Bar, Bar, Wired for |
|-------------------|---|

| | |
|-----------------|---|
| | Sound |
| Appliances | Dishwasher, Gas Range, Gas Stove, Microwave, Refrigerator, Washer/Dryer, Window Coverings, Central Air Conditioner, Bar Fridge, Double Oven, See Remarks, Wine Refrigerator |
| Heating | Forced Air, See Remarks |
| Cooling | Central Air |
| Fireplace | Yes |
| # of Fireplaces | 1 |
| Fireplaces | Gas |
| Has Basement | Yes |
| Basement | Exterior Entry, Finished, Full, Walk-Out |

Exterior

| | |
|-------------------|--|
| Exterior Features | Balcony, BBQ gas line, Storage, Garden |
| Lot Description | Back Yard, Few Trees, Landscaped, Lawn, Level, Open Lot, Rectangular Lot, Views, Cleared, Fruit Trees/Shrub(s), Garden, Pasture, See Remarks |
| Roof | Asphalt Shingle |
| Construction | Concrete, Stone, Stucco, Wood Frame, See Remarks |
| Foundation | Poured Concrete |

Additional Information

| | |
|----------------|-------------------|
| Date Listed | May 28th, 2025 |
| Days on Market | 60 |
| Zoning | Rural Residential |

Listing Details

| | |
|----------------|--------------|
| Listing Office | RE/MAX First |
|----------------|--------------|

Data is supplied by Pillar 9â„¢ MLS® System. Pillar 9â„¢ is the owner of the copyright in its MLS® System. Data is deemed reliable but is not guaranteed accurate by Pillar 9â„¢. The trademarks MLS®, Multiple Listing Service® and the associated logos are owned by The Canadian Real Estate Association (CREA) and identify the quality of services provided by real estate professionals who are members of CREA. Used under license.