

\$87,500 - 308, 5607 31 Street, Lloydminster

MLS® #A2225127

\$87,500

2 Bedroom, 1.00 Bathroom, 796 sqft

Residential on 0.00 Acres

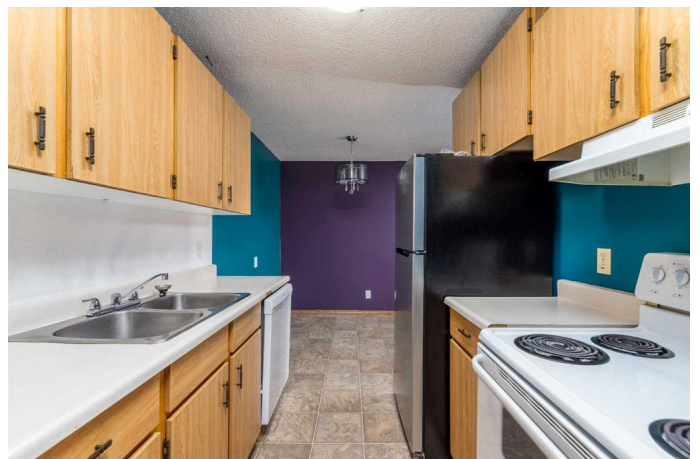
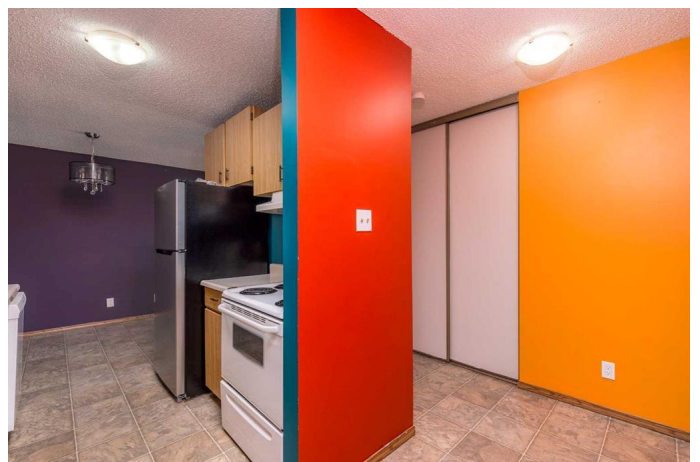
Steele Heights, Lloydminster, Alberta

Welcome to this bright and spacious top-floor condo featuring 2 bedrooms, 1 full bathroom, and a large north-facing balcony perfect for enjoying quiet mornings or evening sunsets. This unit offers a functional layout with an open living and dining area, ideal for relaxing or entertaining. Enjoy the convenience of being just minutes away from shopping, schools, and a beautiful park, making this a great opportunity for first-time buyers, downsizers, or investors. With its top-floor location, you'll appreciate the added privacy and natural light throughout. Don't miss your chance to own this well-located, affordable condo in a desirable neighbourhood! Check out the 3D virtual tour!

Built in 1984

Essential Information

MLS® #	A2225127
Price	\$87,500
Bedrooms	2
Bathrooms	1.00
Full Baths	1
Square Footage	796
Acres	0.00
Year Built	1984
Type	Residential
Sub-Type	Apartment



Style	Single Level Unit
Status	Active

Community Information

Address	308, 5607 31 Street
Subdivision	Steele Heights
City	Lloydminster
County	Lloydminster
Province	Alberta
Postal Code	T9V 1W3

Amenities

Amenities	Visitor Parking
Parking Spaces	1
Parking	Assigned, Stall

Interior

Interior Features	Laminate Counters, Storage
Appliances	Dishwasher, Range Hood, Refrigerator, Stove(s), Washer/Dryer, Window Coverings
Heating	Baseboard, Natural Gas
Cooling	Wall Unit(s)
# of Stories	3

Exterior

Exterior Features	Balcony
Construction	Concrete, Wood Frame, Wood Siding

Additional Information

Date Listed	June 10th, 2025
Days on Market	15
Zoning	R4

Listing Details

Listing Office	CENTURY 21 DRIVE
----------------	------------------

Data is supplied by Pillar 9â„¢ MLS® System. Pillar 9â„¢ is the owner of the copyright in its MLS® System. Data is deemed reliable but is not guaranteed accurate by Pillar 9â„¢. The trademarks MLS®, Multiple Listing Service® and the associated logos are owned by The Canadian Real Estate Association (CREA) and identify the quality of services provided by real estate professionals who are members of CREA. Used under license.