

\$499,900 - 66 Cameron Close, Sylvan Lake

MLS® #A2222933

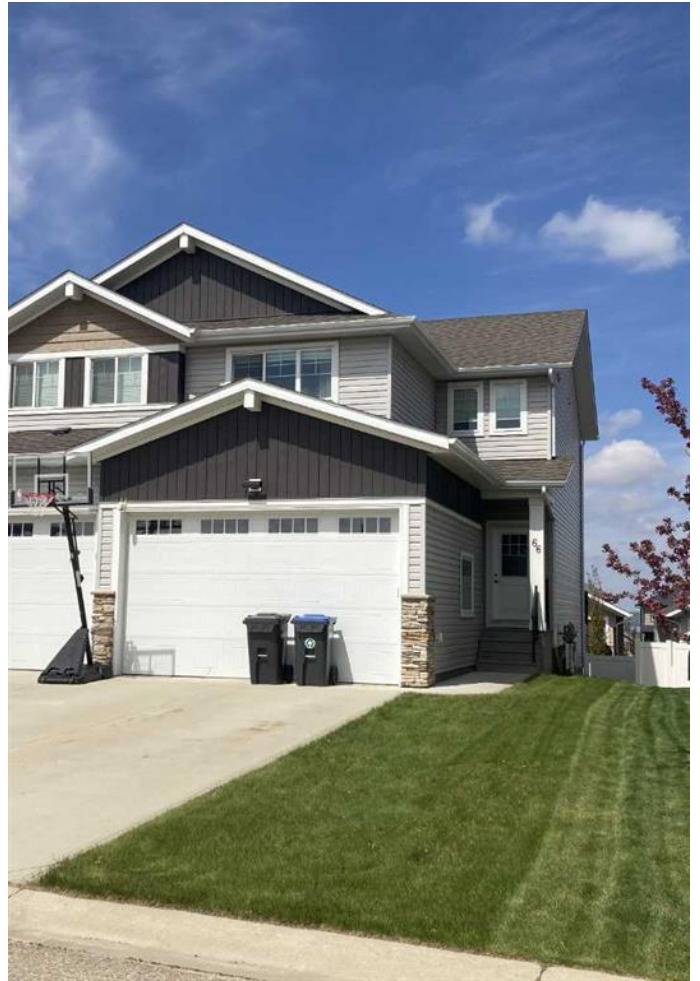
\$499,900

3 Bedroom, 4.00 Bathroom, 1,462 sqft

Residential on 0.07 Acres

Crestview, Sylvan Lake, Alberta

WELCOME TO THIS EXECUTIVE STYLED WALKOUT HALF DUPLEX IN IMMACULATE CONDITION! The large entrance with a shoe bench that enters into a open floorplan . Stainless steel appliances and lots of natural light make this kitchen very inviting and joins with the eating area and the spacious living room. There is a nice deck off the eating area with plenty of room for your barbecue or smoker. Three bedrooms upstairs, all very spacious, a 4 piece ensuite and a second 4 piece bathroom. Downstairs is fully has quality finishings, a wall fireplace, custom tiled shower and a huge Ikea closet. The walkout leads you to a secluded enclosed hot tub. Fully fenced with shed. The attached garage is insulated and drywalled with a drain and a loft for extra storage.



Built in 2017

Essential Information

| | |
|----------------|-----------|
| MLS® # | A2222933 |
| Price | \$499,900 |
| Bedrooms | 3 |
| Bathrooms | 4.00 |
| Full Baths | 3 |
| Half Baths | 1 |
| Square Footage | 1,462 |
| Acres | 0.07 |
| Year Built | 2017 |

| | |
|----------|------------------------|
| Type | Residential |
| Sub-Type | Semi Detached |
| Style | 2 Storey, Side by Side |
| Status | Active |

Community Information

| | |
|-------------|------------------|
| Address | 66 Cameron Close |
| Subdivision | Crestview |
| City | Sylvan Lake |
| County | Red Deer County |
| Province | Alberta |
| Postal Code | T4S 0N5 |

Amenities

| | |
|----------------|------------------------------------|
| Parking Spaces | 1 |
| Parking | Concrete Driveway, Garage Attached |
| # of Garages | 1 |

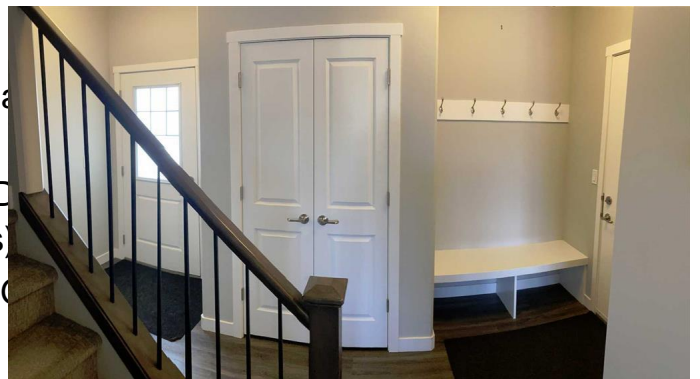
Interior

| | |
|-------------------|---|
| Interior Features | Central Vacuum, Kitchen Island, Open Floorplan |
| Appliances | Bar Fridge, Dishwasher, D Range, Refrigerator, Stove(s) |
| Heating | In Floor, Forced Air, Natural Gas |
| Cooling | None |
| Fireplace | Yes |
| # of Fireplaces | 1 |
| Fireplaces | Electric |
| Has Basement | Yes |
| Basement | Finished, Full |

Exterior

| | |
|-------------------|-----------------------------|
| Exterior Features | None |
| Lot Description | Back Yard, Landscaped, Lawn |
| Roof | Asphalt Shingle |
| Construction | Wood Frame |
| Foundation | Poured Concrete |

Additional Information



| | |
|----------------|----------------|
| Date Listed | May 20th, 2025 |
| Days on Market | 5 |
| Zoning | R5A |

Listing Details

| | |
|----------------|-----------------------------------|
| Listing Office | Royal LePage Network Realty Corp. |
|----------------|-----------------------------------|

Data is supplied by Pillar 9â„¢ MLS® System. Pillar 9â„¢ is the owner of the copyright in its MLS® System. Data is deemed reliable but is not guaranteed accurate by Pillar 9â„¢. The trademarks MLS®, Multiple Listing Service® and the associated logos are owned by The Canadian Real Estate Association (CREA) and identify the quality of services provided by real estate professionals who are members of CREA. Used under license.