

\$495,000 - 14132 East Bank Road, Rural Yellowhead County

MLS® #A2222743

\$495,000

4 Bedroom, 3.00 Bathroom, 2,297 sqft
Residential on 12.90 Acres

NONE, Rural Yellowhead County, Alberta

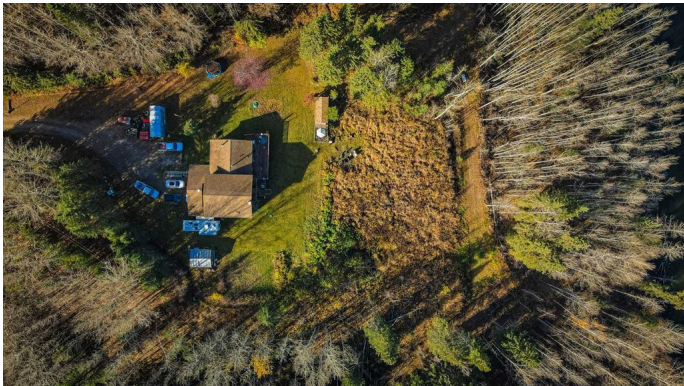
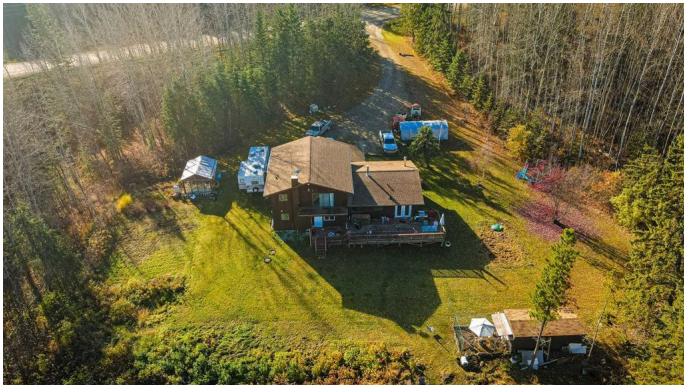
Nestled on 12.9 acres along the East Bank Road, this 4-bedroom, 3-bathroom split-level home offers both space and privacy with stunning views of the McLeod River. The home features two separate living areas, making it ideal for extended family, guests or entertaining. The main living space includes 3 spacious bedrooms, 2 bathrooms, kitchen, and a bright living room perfect for entertaining or relaxing.

The second living area, with its own entrance, offers 1 bedroom, 1 bathroom, and a kitchen and living room, providing a cozy and private retreat. Outside, enjoy the peaceful setting with a private yard and the tranquil views of the river, making this property a perfect blend of rural charm and comfort. This home has also recently been repainted.

Built in 1978

Essential Information

| | |
|----------------|-----------|
| MLS® # | A2222743 |
| Price | \$495,000 |
| Bedrooms | 4 |
| Bathrooms | 3.00 |
| Full Baths | 3 |
| Square Footage | 2,297 |



| | |
|------------|---------------------------------------|
| Acres | 12.90 |
| Year Built | 1978 |
| Type | Residential |
| Sub-Type | Detached |
| Style | 4 Level Split, Acreage with Residence |
| Status | Active |

Community Information

| | |
|-------------|-------------------------|
| Address | 14132 East Bank Road |
| Subdivision | NONE |
| City | Rural Yellowhead County |
| County | Yellowhead County |
| Province | Alberta |
| Postal Code | T7E 3Z4 |

Amenities

| | |
|--------------|------------------------|
| Parking | Double Garage Attached |
| # of Garages | 1 |

Interior

| | |
|-------------------|---|
| Interior Features | See Remarks |
| Appliances | Dishwasher, Dryer, Range Hood, Refrigerator, Stove(s), Washer |
| Heating | Forced Air |
| Cooling | None |
| Fireplace | Yes |
| # of Fireplaces | 1 |
| Fireplaces | Living Room, Wood Burning |
| Has Basement | Yes |
| Basement | Crawl Space, Partial |

Exterior

| | |
|-------------------|-------------------------|
| Exterior Features | Private Yard |
| Lot Description | Lawn, Many Trees |
| Roof | Asphalt Shingle |
| Construction | Wood Frame, Wood Siding |
| Foundation | Poured Concrete |

Additional Information

| | |
|-------------|----------------|
| Date Listed | May 20th, 2025 |
|-------------|----------------|

| | |
|----------------|----|
| Days on Market | 3 |
| Zoning | RD |

Listing Details

| | |
|----------------|------------------------|
| Listing Office | CENTURY 21 TWIN REALTY |
|----------------|------------------------|

Data is supplied by Pillar 9â„¢ MLS® System. Pillar 9â„¢ is the owner of the copyright in its MLS® System. Data is deemed reliable but is not guaranteed accurate by Pillar 9â„¢. The trademarks MLS®, Multiple Listing Service® and the associated logos are owned by The Canadian Real Estate Association (CREA) and identify the quality of services provided by real estate professionals who are members of CREA. Used under license.