

\$330,000 - 822 28 Street, Wainwright

MLS® #A2221409

\$330,000

3 Bedroom, 3.00 Bathroom, 1,465 sqft
Residential on 0.10 Acres

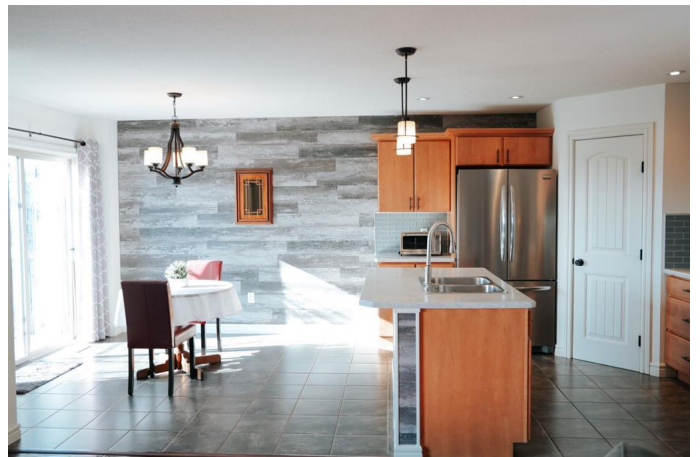
Wainwright, Wainwright, Alberta

This impeccably cared-for home offers the perfect opportunity for those seeking a truly move-in ready property with timeless updates and thoughtful design. With key upgrades completed just three years ago, this home continues to shine with pride of ownership throughout.

The main level welcomes you with fresh, neutral tones and hand-scraped engineered hardwood flooring that enhances the open-concept layout. The kitchen features professionally renovated countertops and a stylish backsplash installed by a well-respected local contractor. A modern stainless steel appliances, along with a walk-through pantry, make this space as functional as it is beautiful. Adjacent to the kitchen, the formal dining area and inviting living room feature warm accent walls, creating a cozy and stylish ambiance. A convenient half bath and direct interior access to the 21' x 18' heated garage complete the main floor.

Upstairs, youâ€™ll find a spacious primary suite with a large walk-in closet and shared access to a luxurious 5-piece bathroom complete with a soaker tub. Two additional bedrooms, a second-floor laundry area, and a bonus sitting space provide comfort and convenience for everyday living.

The fully finished basement adds valuable living space, with a generous family room and



games area, along with a full 4-piece bathroomâ€”perfect for relaxation or entertaining guests.

Enjoy year-round comfort with central air conditioning, and make the most of summer with a large, low-maintenance Trex deck, ideal for outdoor dining and gatherings. The fully fenced backyard offers a private retreat with room to play, relax, or garden.

This home has been lovingly maintained and thoughtfully updated to provide lasting value and comfort. All the hard work has been doneâ€”just move in and enjoy!

Built in 2012

Essential Information

| | |
|----------------|------------------------|
| MLS® # | A2221409 |
| Price | \$330,000 |
| Bedrooms | 3 |
| Bathrooms | 3.00 |
| Full Baths | 2 |
| Half Baths | 1 |
| Square Footage | 1,465 |
| Acres | 0.10 |
| Year Built | 2012 |
| Type | Residential |
| Sub-Type | Semi Detached |
| Style | 2 Storey, Side by Side |
| Status | Active |

Community Information

| | |
|-------------|----------------------------|
| Address | 822 28 Street |
| Subdivision | Wainwright |
| City | Wainwright |
| County | Wainwright No. 61, M.D. of |
| Province | Alberta |
| Postal Code | T9W 0A7 |

Amenities

| | |
|----------------|------------------------|
| Parking Spaces | 3 |
| Parking | Single Garage Attached |
| # of Garages | 1 |

Interior

| | |
|-------------------|---|
| Interior Features | Kitchen Island, Open Floorplan, Pantry, Recessed Lighting, Vinyl Windows, Walk-In Closet(s) |
| Appliances | Central Air Conditioner, Dishwasher, Dryer, Garage Control(s), Microwave Hood Fan, Refrigerator, Stove(s), Washer |
| Heating | Forced Air |
| Cooling | Central Air |
| Has Basement | Yes |
| Basement | Finished, Full |

Exterior

| | |
|-------------------|--|
| Exterior Features | Private Yard |
| Lot Description | Back Yard, Interior Lot, Lawn, Rectangular Lot |
| Roof | Asphalt Shingle |
| Construction | Vinyl Siding |
| Foundation | Poured Concrete |

Additional Information

| | |
|----------------|----------------|
| Date Listed | May 15th, 2025 |
| Days on Market | 2 |
| Zoning | R2 |

Listing Details

| | |
|----------------|-----------------------|
| Listing Office | RE/MAX BAUGHAN REALTY |
|----------------|-----------------------|

Data is supplied by Pillar 9â„¢ MLS® System. Pillar 9â„¢ is the owner of the copyright in its MLS® System. Data is deemed reliable but is not guaranteed accurate by Pillar 9â„¢. The trademarks MLS®, Multiple Listing Service® and the associated logos are owned by The Canadian Real Estate Association (CREA) and identify the quality of services provided by real estate professionals who are members of CREA. Used under license.