

\$129,000 - 7, 41310 282 Range Road, Rural Lacombe County

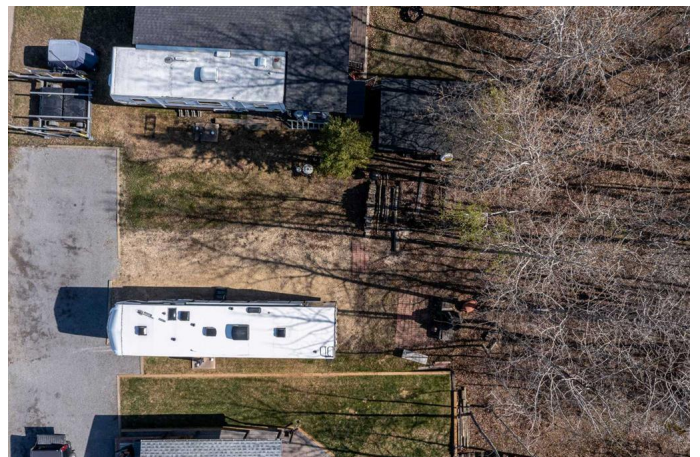
MLS® #A2219635

\$129,000

0 Bedroom, 0.00 Bathroom,
Land on 0.08 Acres

N/A, Rural Lacombe County, Alberta

Visit REALTOR® website for additional information. Lakeside Living at Its Best! This exceptional recreation lot backs onto Gull Lake, offering unbeatable access & views in a beautiful location at DeGraff's Resort. Park your RV or Park Model Home and enjoy the perks of this fully serviced (3 seasons) lot in a gated community with power, 50-amp service, water & sewer already in place. There is room for 3 - 4 vehicles to park on a limestone pad. Unwind by the outdoor fireplace after a day on the water. Whether it's boating, relaxing, or just soaking in the surroundings, this is the laid-back, friendly resort lifestyle everyone dreams of!



Essential Information

MLS® #	A2219635
Price	\$129,000
Bathrooms	0.00
Acres	0.08
Type	Land
Sub-Type	Residential Land
Status	Active

Community Information

Address	7, 41310 282 Range Road
Subdivision	N/A
City	Rural Lacombe County

County	Lacombe County
Province	Alberta
Postal Code	T4L 2N3

Additional Information

Date Listed	May 10th, 2025
Days on Market	3
Zoning	R-RVR

Listing Details

Listing Office	PG Direct Realty Ltd.
----------------	-----------------------

Data is supplied by Pillar 9â„¢ MLSÂ® System. Pillar 9â„¢ is the owner of the copyright in its MLSÂ® System. Data is deemed reliable but is not guaranteed accurate by Pillar 9â„¢. The trademarks MLSÂ®, Multiple Listing ServiceÂ® and the associated logos are owned by The Canadian Real Estate Association (CREA) and identify the quality of services provided by real estate professionals who are members of CREA. Used under license.