

\$220,000 - 140 Cree Road, Fort McMurray

MLS® #A2214107

\$220,000

3 Bedroom, 2.00 Bathroom, 1,168 sqft
Residential on 0.09 Acres

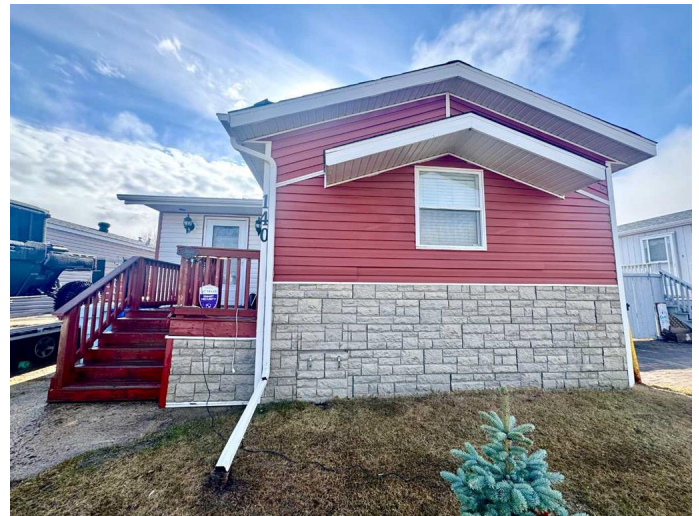
Timberlea, Fort McMurray, Alberta

Welcome to 140 Cree Road, nestled in a welcoming, family-friendly neighbourhood. This home is ideal for first-time buyers looking to enter the market and enjoy the benefits of homeownership without the added cost of condo fees. Conveniently located, this property is just a short drive to schools, shopping, and a quick walk to playgrounds and bus stops. For outdoor enthusiasts, ATV access is nearby, adding to the appeal of the area. The home offers three bedrooms, including a spacious primary bedroom with its own ensuite, plus two additional bedrooms and a 4-piece main bath. The large yard provides plenty of space to enjoy, plus an oversized shed that could be converted into an entertainment space.Â Backing onto Confederation Way, the property features a gated entry to walking trails, offering privacy with no neighbours directly behind you.Â Additional highlights include ample parking, a generous back deck for outdoor relaxation, and the bonus of no condo fees, making this an affordable and attractive option for new homeowners. Donâ€™t miss your chance to make this great starter home yours and call today to book your personal viewing.

Built in 1997

Essential Information

| | |
|--------|-----------|
| MLS® # | A2214107 |
| Price | \$220,000 |



Main Floor Exterior Area 1168.83 sq ft
Interior Area 1070.01 sq ft



| | |
|----------------|-------------------------|
| Bedrooms | 3 |
| Bathrooms | 2.00 |
| Full Baths | 2 |
| Square Footage | 1,168 |
| Acres | 0.09 |
| Year Built | 1997 |
| Type | Residential |
| Sub-Type | Detached |
| Style | Double Wide Mobile Home |
| Status | Active |

Community Information

| | |
|-------------|---------------|
| Address | 140 Cree Road |
| Subdivision | Timberlea |
| City | Fort McMurray |
| County | Wood Buffalo |
| Province | Alberta |
| Postal Code | T9K 1X7 |

Amenities

| | |
|----------------|------------|
| Parking Spaces | 3 |
| Parking | Off Street |

Interior

| | |
|-------------------|---------------|
| Interior Features | Breakfast Bar |
| Appliances | See Remarks |
| Heating | Forced Air |
| Cooling | None |
| Basement | None |

Exterior

| | |
|-------------------|--|
| Exterior Features | None |
| Lot Description | Back Yard, Front Yard, Standard Shaped Lot |
| Roof | Asphalt Shingle |
| Construction | Vinyl Siding |
| Foundation | Block |

Additional Information

| | |
|-------------|------------------|
| Date Listed | April 22nd, 2025 |
|-------------|------------------|

| | |
|----------------|-----|
| Days on Market | 26 |
| Zoning | RMH |

Listing Details

| | |
|----------------|------------------------|
| Listing Office | ROYAL LEPAGE BENCHMARK |
|----------------|------------------------|

Data is supplied by Pillar 9â„¢ MLS® System. Pillar 9â„¢ is the owner of the copyright in its MLS® System. Data is deemed reliable but is not guaranteed accurate by Pillar 9â„¢. The trademarks MLS®, Multiple Listing Service® and the associated logos are owned by The Canadian Real Estate Association (CREA) and identify the quality of services provided by real estate professionals who are members of CREA. Used under license.