

# \$279,900 - 4717 28 Street, Lloydminster

MLS® #A2213046

## \$279,900

5 Bedroom, 3.00 Bathroom, 1,135 sqft

Residential on 0.17 Acres

East Lloydminster, Lloydminster,  
Saskatchewan

Great location on the Sask this home features 5 bedrooms 2 full bathrooms and a half bathroom in the master bedroom. There are 3 bedrooms on the main floor and 2 in the basement. This home has new windows lots of natural light, a white kitchen and all appliances, with a nice dining area. Outside is a large deck, fenced back yard and an oversized driveway with lots of parking. Come and have a look.

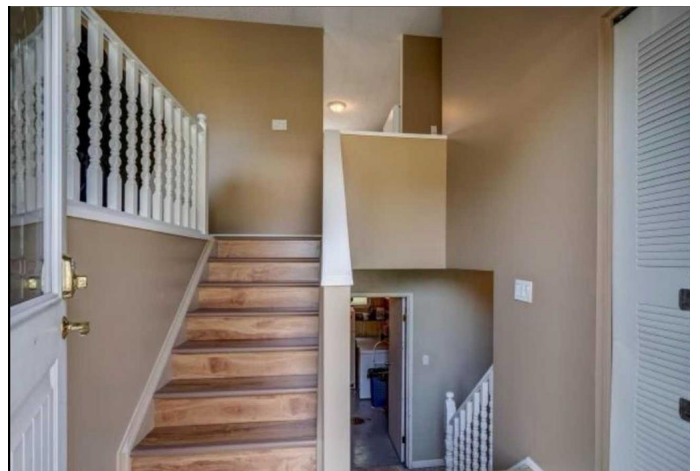
Built in 1978

## Essential Information

MLS® #	A2213046
Price	\$279,900
Bedrooms	5
Bathrooms	3.00
Full Baths	2
Half Baths	1
Square Footage	1,135
Acres	0.17
Year Built	1978
Type	Residential
Sub-Type	Detached
Style	Bi-Level
Status	Active

## Community Information

Address 4717 28 Street



Subdivision	East Lloydminster
City	Lloydminster
County	Lloydminster
Province	Saskatchewan
Postal Code	S9V 1G8

### Amenities

Parking Spaces	5
Parking	Driveway, Oversized, Parking Pad, Asphalt

### Interior

Interior Features	See Remarks
Appliances	Dishwasher, Refrigerator, Stove(s), Washer/Dryer
Heating	Forced Air, Natural Gas
Cooling	None
Has Basement	Yes
Basement	Finished, Full

### Exterior

Exterior Features	Fire Pit
Lot Description	Lawn, Rectangular Lot
Roof	Asphalt Shingle
Construction	Vinyl Siding
Foundation	Poured Concrete

### Additional Information

Date Listed	April 17th, 2025
Days on Market	33
Zoning	R1

### Listing Details

Listing Office	eXp Realty (Lloyd)
----------------	--------------------

Data is supplied by Pillar 9â„¢ MLS® System. Pillar 9â„¢ is the owner of the copyright in its MLS® System. Data is deemed reliable but is not guaranteed accurate by Pillar 9â„¢. The trademarks MLS®, Multiple Listing Service® and the associated logos are owned by The Canadian Real Estate Association (CREA) and identify the quality of services provided by real estate professionals who are members of CREA. Used under license.