

# \$399,000 - 15 Pineridge Crescent, Pincher Creek

MLS® #A2212834

**\$399,000**

4 Bedroom, 2.00 Bathroom, 1,052 sqft

Residential on 0.22 Acres

NONE, Pincher Creek, Alberta

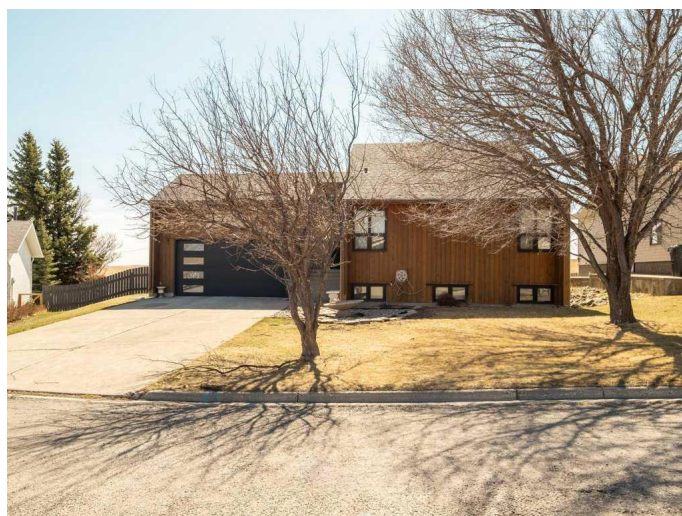
You dream home awaits you in Pincher Creek, Alberta—your gateway to adventure! Nestled just 25 minutes from Waterton Lakes National Park, 30 minutes from Castle Mountain Resort—™s world-class skiing, and a short drive to Crowsnest Pass, this property offers the perfect blend of serene living and outdoor thrills.

Step inside to discover a move-in-ready gem featuring freshly renovated bathrooms with modern finishes, a newly built deck ideal for soaking in mountain views, and a garage with a new floor and door for added convenience. This charming home boasts a spacious layout, perfect for families or those seeking a cozy retreat, with a tranquil backyard for relaxing after a day of hiking, skiing, or fishing. With 1 bed up and 4 down, it can accommodate a large family. With 2 walkouts in the basement (including one in a bedroom). The skylights let in tremendous light to the upstairs, including the primary bedroom.

Built in 1983

## Essential Information

MLS® #	A2212834
Price	\$399,000
Bedrooms	4
Bathrooms	2.00
Full Baths	2



Square Footage	1,052
Acres	0.22
Year Built	1983
Type	Residential
Sub-Type	Detached
Style	Bungalow
Status	Active

### Community Information

Address	15 Pineridge Crescent
Subdivision	NONE
City	Pincher Creek
County	Pincher Creek No. 9, M.D. of
Province	Alberta
Postal Code	T0K1W0

### Amenities

Parking Spaces	4
Parking	Double Garage Attached
# of Garages	2

### Interior

Interior Features	Ceiling Fan(s), Vaulted Ceiling(s), Natural Woodwork
Appliances	Dishwasher, Range Hood, Refrigerator, Stove(s)
Heating	Forced Air
Cooling	None
Has Basement	Yes
Basement	Finished, Full

### Exterior

Exterior Features	Private Entrance, Private Yard
Lot Description	Back Yard, Backs on to Park/Green Space, Front Yard, Lawn, Sloped, Street Lighting, Views, Few Trees
Roof	Asphalt Shingle
Construction	Stucco, Wood Siding
Foundation	Wood

### Additional Information

Date Listed	April 17th, 2025
-------------	------------------

Days on Market	35
Zoning	R1

**Listing Details**

Listing Office	2 PERCENT REALTY
----------------	------------------

Data is supplied by Pillar 9â„¢ MLS® System. Pillar 9â„¢ is the owner of the copyright in its MLS® System. Data is deemed reliable but is not guaranteed accurate by Pillar 9â„¢. The trademarks MLS®, Multiple Listing Service® and the associated logos are owned by The Canadian Real Estate Association (CREA) and identify the quality of services provided by real estate professionals who are members of CREA. Used under license.