

\$2,750,000 - 282020 Range Road 43 Road, Rural Rocky View County

MLS® #A2211934

\$2,750,000

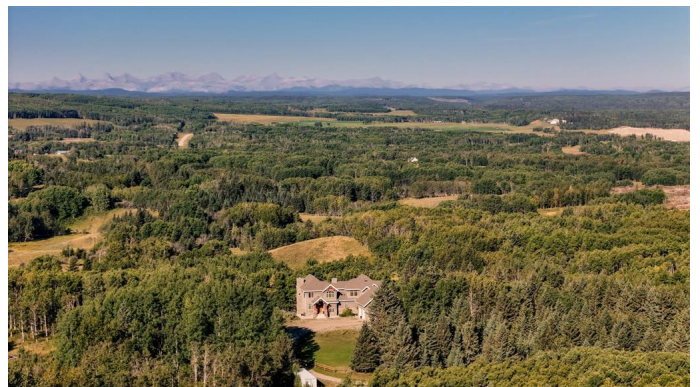
4 Bedroom, 5.00 Bathroom, 4,403 sqft
Residential on 25.00 Acres

NONE, Rural Rocky View County, Alberta

Spectacular Mountain Views & Luxurious Acreage Living Near Cochrane. Discover over 6,300 sq ft of refined living on 25 private acres (with the option to purchase the contiguous 125 acres for a total package of 150 acres) just 20 minutes north of Cochrane. This custom-built ICF home offers unparalleled energy efficiency, soundproofing, and fire resistance, enhanced by tornado clips and a security system. Enjoy breathtaking Rocky Mountain panoramas from expansive 20-foot windows in the grand living area. The home boasts travertine flooring, solid knotty Alder wood accents, Control 4 sound, AC, and in-floor heating throughout.

Culinary enthusiasts will adore the gourmet kitchen featuring an induction cooktop, double ovens, double Thermidor fridge/freezer, a walk-in pantry, and a unique Artigiano Italian brick pizza oven. Custom cabinetry, granite countertops, and a farmhouse copper sink add to the elegance. Relax by one of two Napoleon wood-burning fireplaces or step onto the main deck from the dining room or sunroom to soak in the views.

The property includes a versatile 860 sq ft legal suite above the 4-car garage, complete with a full kitchen, 3-pc bath, separate entrance, and individual climate control â€“ perfect for guests or extended family. The



primary suite offers a private balcony with stunning mountain vistas and a spa-like ensuite featuring a freestanding copper tub and steam shower.

The fully finished basement provides exceptional an entertainment space with a games room (pool table included), wet bar, theatre room with surround sound, and two additional bedrooms with private backyard access. Should you decide you like this home but need more land the Sellers own a contiguous 125 acres on a separate title that could be purchased along with this home on its 25 acres. A total of 150 acres could be owned with this house. Enjoy the tranquility of rural living with easy access to Cochrane and Calgary. Schedule your private viewing today.

Built in 2013

Essential Information

MLS® #	A2211934
Price	\$2,750,000
Bedrooms	4
Bathrooms	5.00
Full Baths	3
Half Baths	2
Square Footage	4,403
Acres	25.00
Year Built	2013
Type	Residential
Sub-Type	Detached
Style	2 Storey, Acreage with Residence
Status	Active

Community Information

Address	282020 Range Road 43 Road
Subdivision	NONE
City	Rural Rocky View County

County	Rocky View County
Province	Alberta
Postal Code	T4C 1B6

Amenities

Utilities	Electricity Connected, Electricity Paid For, Natural Gas Paid, Natural Gas Connected, Satellite Internet Available
Parking	Additional Parking, Driveway, Electric Gate, Front Drive, Garage Door Opener, Gated, Heated Garage, Insulated, Oversized, RV Access/Parking, Quad or More Attached
# of Garages	4

Interior

Interior Features	Built-in Features, Ceiling Fan(s), Closet Organizers, Double Vanity, French Door, Granite Counters, High Ceilings, Kitchen Island, Natural Woodwork, No Animal Home, No Smoking Home, Open Floorplan, Pantry, Recessed Lighting, Separate Entrance, Skylight(s), Smart Home, Soaking Tub, Solar Tube(s), Storage, Sump Pump(s), Vaulted Ceiling(s), Walk-In Closet(s), Wet Bar, Bar, Crown Molding, Sauna
Appliances	Central Air Conditioner, Dishwasher, Electric Cooktop, Range Hood, Refrigerator, Washer/Dryer, Wine Refrigerator, Double Oven, Induction Cooktop, Water Purifier
Heating	Boiler, High Efficiency, In Floor, Fireplace(s), Forced Air, Natural Gas, Humidity Control, Wood Stove
Cooling	Central Air, Sep. HVAC Units
Fireplace	Yes
# of Fireplaces	2
Fireplaces	Living Room, Wood Burning, Basement, Stone
Has Basement	Yes
Basement	Finished, Full, Walk-Out

Exterior

Exterior Features	Balcony, Barbecue, BBQ gas line, Fire Pit, Garden, Lighting, Private Entrance, Private Yard, Rain Barrel/Cistern(s)
Lot Description	Cleared, Farm, Garden, Landscaped, Lawn, Low Maintenance Landscape, Private, Rolling Slope, Treed, Meadow, Many Trees, Native Plants, Pasture, Secluded, Subdivided, Wooded
Roof	Asphalt Shingle
Construction	Stone, Stucco, ICFs (Insulated Concrete Forms)
Foundation	ICF Block

Additional Information

Date Listed	May 7th, 2025
Days on Market	86
Zoning	AG

Listing Details

Listing Office	Sotheby's International Realty Canada
----------------	---------------------------------------

Data is supplied by Pillar 9â„¢ MLS® System. Pillar 9â„¢ is the owner of the copyright in its MLS® System. Data is deemed reliable but is not guaranteed accurate by Pillar 9â„¢. The trademarks MLS®, Multiple Listing Service® and the associated logos are owned by The Canadian Real Estate Association (CREA) and identify the quality of services provided by real estate professionals who are members of CREA. Used under license.