

\$11 - 32 & 36 Industrial Drive Se, Redcliff

MLS® #A2211599

\$11

0 Bedroom, 0.00 Bathroom,
Commercial on 0.00 Acres

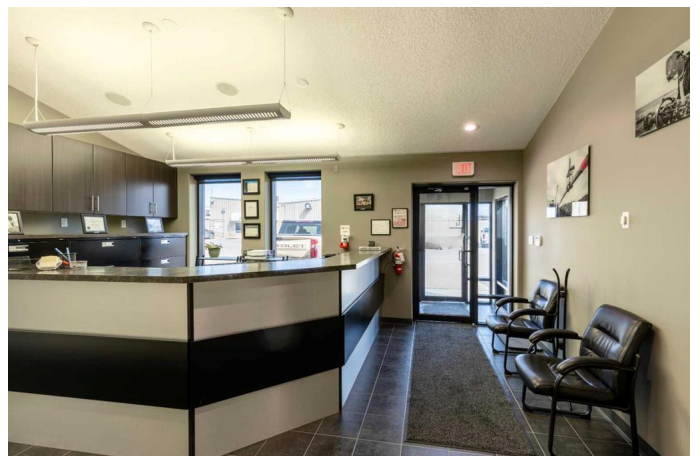
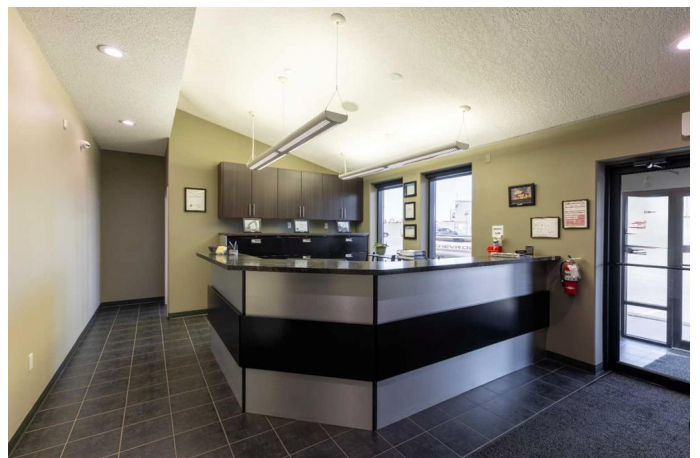
Redcliff Industrial, Redcliff, Alberta

Now available for lease in a well-maintained, shared commercial building is a versatile space that includes two offices and two shop bays, each with large overhead doors for easy access. This flexible space is ideal for a variety of light industrial, service, or trades-based businesses. The lease can be tailored to your needs, with the owner open to negotiating more or less space depending on your requirements. Tenants will also have access to shared amenities, including bathrooms, a boardroom, training room, lunch room, and a fenced yard with ample space for equipment or vehicle storage. Whether you're expanding, relocating, or launching a new operation, this space offers both practicality and adaptability in a professional setting. Additional Rent is \$5.02 and includes taxes, utilities and insurance (not renters insurance).

Built in 1980

Essential Information

MLS® #	A2211599
Price	\$11
Bathrooms	0.00
Acres	0.00
Year Built	1980
Type	Commercial
Sub-Type	Industrial
Status	Active



Community Information

Address	32 & 36 Industrial Drive Se
Subdivision	Redcliff Industrial
City	Redcliff
County	Cypress County
Province	Alberta
Postal Code	T0J 2P0

Additional Information

Date Listed	May 27th, 2025
Days on Market	33
Zoning	I1

Listing Details

Listing Office	RIVER STREET REAL ESTATE
----------------	--------------------------

Data is supplied by Pillar 9â„¢ MLS® System. Pillar 9â„¢ is the owner of the copyright in its MLS® System. Data is deemed reliable but is not guaranteed accurate by Pillar 9â„¢. The trademarks MLS®, Multiple Listing Service® and the associated logos are owned by The Canadian Real Estate Association (CREA) and identify the quality of services provided by real estate professionals who are members of CREA. Used under license.