

# \$370,000 - 259 Sprague Way Se, Medicine Hat

---

MLS® #A2209264

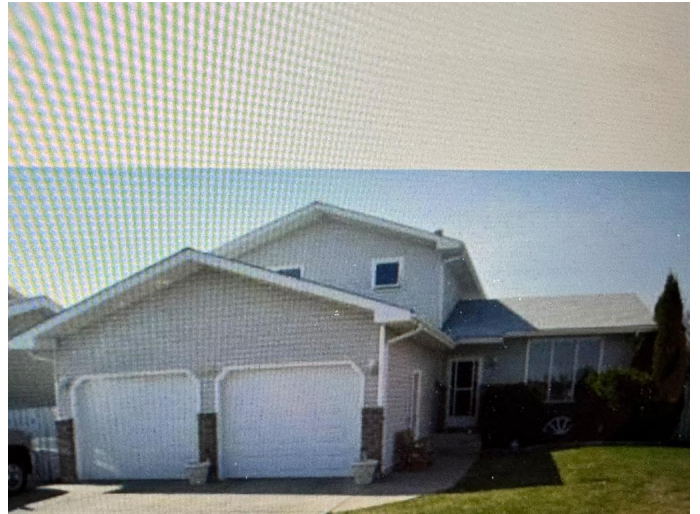
## \$370,000

5 Bedroom, 3.00 Bathroom, 1,776 sqft  
Residential on 0.14 Acres

SE Southridge, Medicine Hat, Alberta

Court ordered sale. Everything is "as is"

Built in 1989



## Essential Information

MLS® #	A2209264
Price	\$370,000
Bedrooms	5
Bathrooms	3.00
Full Baths	3
Square Footage	1,776
Acres	0.14
Year Built	1989
Type	Residential
Sub-Type	Detached
Style	1 and Half Storey
Status	Active

## Community Information

Address	259 Sprague Way Se
Subdivision	SE Southridge
City	Medicine Hat
County	Medicine Hat
Province	Alberta
Postal Code	T1B 3L9

## Amenities

Parking Spaces	4
Parking	Double Garage Detached

# of Garages 2

### **Interior**

Interior Features See Remarks  
Appliances See Remarks  
Heating Forced Air  
Cooling Central Air  
Has Basement Yes  
Basement Full, Partially Finished

### **Exterior**

Exterior Features None  
Lot Description Back Lane, Back Yard  
Roof Asphalt Shingle  
Construction Brick, Stucco, Vinyl Siding, Wood Frame  
Foundation Poured Concrete

### **Additional Information**

Date Listed April 15th, 2025  
Days on Market 37  
Zoning R-LD

### **Listing Details**

Listing Office RIVER STREET REAL ESTATE

Data is supplied by Pillar 9â„¢ MLSÂ® System. Pillar 9â„¢ is the owner of the copyright in its MLSÂ® System. Data is deemed reliable but is not guaranteed accurate by Pillar 9â„¢. The trademarks MLSÂ®, Multiple Listing ServiceÂ® and the associated logos are owned by The Canadian Real Estate Association (CREA) and identify the quality of services provided by real estate professionals who are members of CREA. Used under license.