

# \$320,000 - 5022 43 Street N, Sylvan Lake

MLS® #A2209182

**\$320,000**

0 Bedroom, 0.00 Bathroom,  
Land on 0.09 Acres

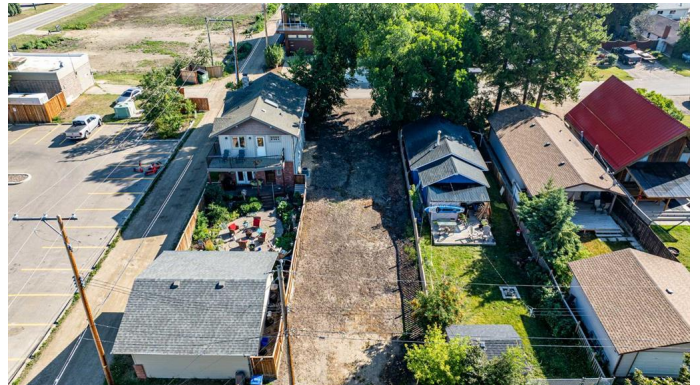
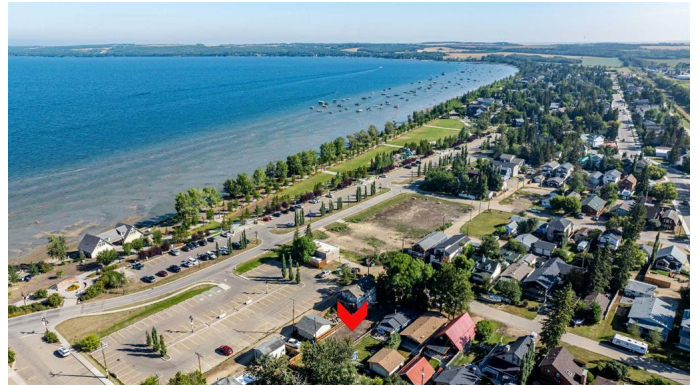
Cottage Area, Sylvan Lake, Alberta

Location, location, location! This rare, vacant lot offers a unique opportunity to build your dream home in one of Sylvan Lake's most sought-after cottage communities. Just a short stroll to the beach, lake, and downtown, this location combines the perfect blend of convenience and natural beauty. This lot has services ON the lot, not just at the street front.

Imagine designing the perfect floor plan to take full advantage of breathtaking lake views—whether you're sipping coffee in the morning or enjoying evening sunsets. The possibilities are endless for creating a custom space that fits your lifestyle, all while being surrounded by the charm and vibrancy of Sylvan Lake's lake life living.

With this prime location, you'll have easy access to everything—be it water activities, dining, shopping, or enjoying the scenic parks and walking trails nearby.

This lot offers an exceptional canvas to make your lake living dream a reality.



## Essential Information

MLS® #	A2209182
Price	\$320,000
Bathrooms	0.00
Acres	0.09

Type	Land
Sub-Type	Residential Land
Status	Active

### **Community Information**

Address	5022 43 Street N
Subdivision	Cottage Area
City	Sylvan Lake
County	Red Deer County
Province	Alberta
Postal Code	T4S 1M3

### **Additional Information**

Date Listed	April 6th, 2025
Days on Market	47
Zoning	R5

### **Listing Details**

Listing Office	Century 21 Maximum
----------------	--------------------

Data is supplied by Pillar 9â„¢ MLS® System. Pillar 9â„¢ is the owner of the copyright in its MLS® System. Data is deemed reliable but is not guaranteed accurate by Pillar 9â„¢. The trademarks MLS®, Multiple Listing Service® and the associated logos are owned by The Canadian Real Estate Association (CREA) and identify the quality of services provided by real estate professionals who are members of CREA. Used under license.