

\$153,000 - 3102, 7201 Poplar Drive, Grande Prairie

MLS® #A2204546

\$153,000

2 Bedroom, 1.00 Bathroom, 915 sqft

Residential on 0.00 Acres

South Patterson Place, Grande Prairie, Alberta

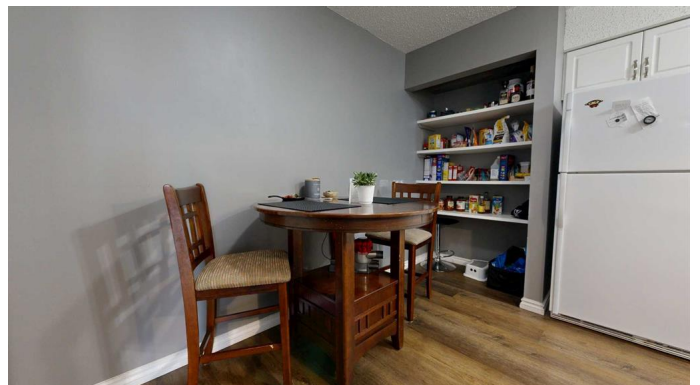
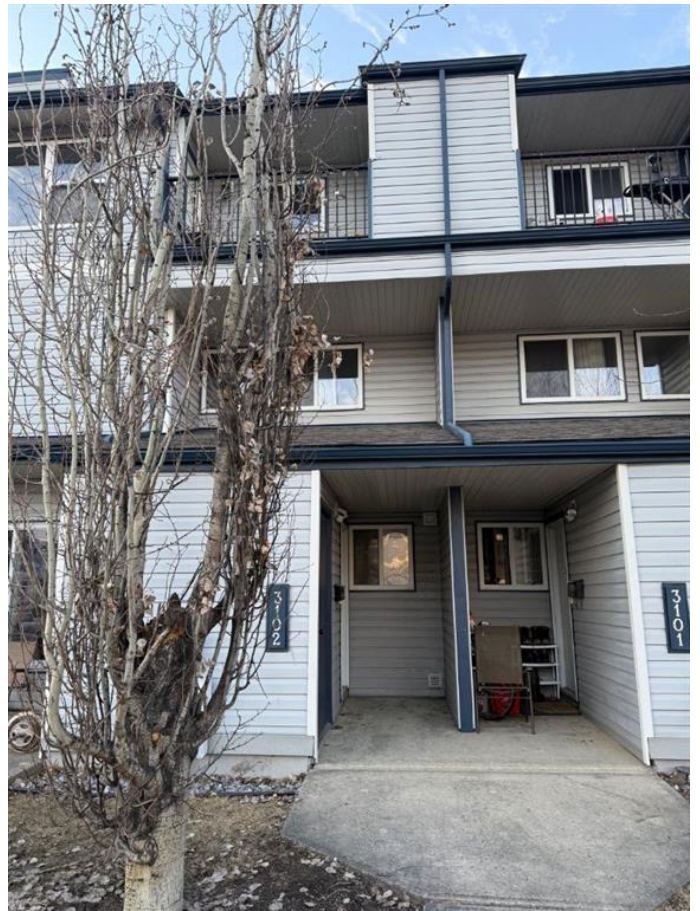
Welcome to Haywood Court! This charming and affordable 2-bedroom, 1-bathroom condo offers a low-maintenance lifestyle in a quiet, well-managed complex. Whether youâ€™re a first-time buyer, investor, or someone looking to downsize, this home checks all the boxes. Enjoy an open-concept living and dining area, functional kitchen layout, and two comfortable bedrooms with great closet space. The unit also features in-suite laundry, a private patio, and designated parking. Located close to parks, schools, shopping, and public transit, this condo combines comfort and convenience at an unbeatable price!

Built in 1981

Essential Information

| | |
|----------------|------------------|
| MLS® # | A2204546 |
| Price | \$153,000 |
| Bedrooms | 2 |
| Bathrooms | 1.00 |
| Full Baths | 1 |
| Square Footage | 915 |
| Acres | 0.00 |
| Year Built | 1981 |
| Type | Residential |
| Sub-Type | Apartment |
| Style | Multi Level Unit |
| Status | Active |

Community Information



| | |
|-------------|-------------------------|
| Address | 3102, 7201 Poplar Drive |
| Subdivision | South Patterson Place |
| City | Grande Prairie |
| County | Grande Prairie |
| Province | Alberta |
| Postal Code | T8V 6C5 |

Amenities

| | |
|----------------|---|
| Amenities | Parking, Storage, Trash, Visitor Parking, Laundry |
| Parking Spaces | 1 |
| Parking | Stall |

Interior

| | |
|-------------------|---|
| Interior Features | No Smoking Home, No Animal Home |
| Appliances | Dishwasher, Electric Oven, Refrigerator, Washer/Dryer |
| Heating | Boiler |
| Cooling | None |
| # of Stories | 2 |

Exterior

| | |
|-------------------|------------------|
| Exterior Features | Private Entrance |
| Construction | Concrete |

Additional Information

| | |
|----------------|-----------------|
| Date Listed | April 8th, 2025 |
| Days on Market | 39 |
| Zoning | RM |

Listing Details

| | |
|----------------|------------|
| Listing Office | eXp Realty |
|----------------|------------|

Data is supplied by Pillar 9â„¢ MLSÂ® System. Pillar 9â„¢ is the owner of the copyright in its MLSÂ® System. Data is deemed reliable but is not guaranteed accurate by Pillar 9â„¢. The trademarks MLSÂ®, Multiple Listing ServiceÂ® and the associated logos are owned by The Canadian Real Estate Association (CREA) and identify the quality of services provided by real estate professionals who are members of CREA. Used under license.