

\$2,996,700 - A, 288 Three Sisters Drive, Canmore

MLS® #A2200436

\$2,996,700

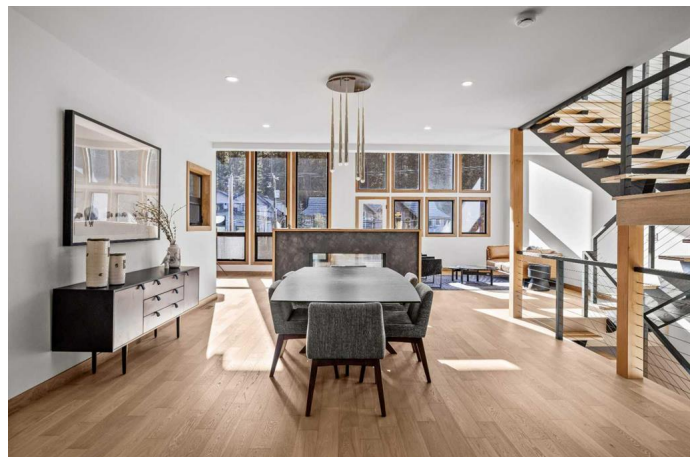
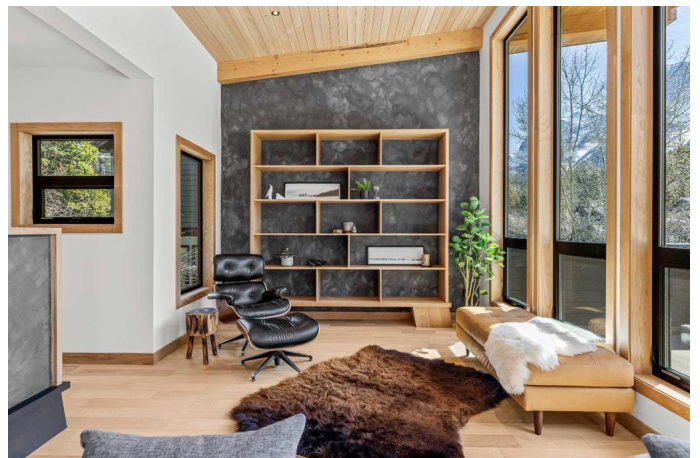
4 Bedroom, 4.00 Bathroom, 3,035 sqft

Residential on 0.08 Acres

Hospital Hill, Canmore, Alberta

Discover the pinnacle of luxury living with this exquisite custom-built duplex by Allweather Builders—a masterpiece of craftsmanship and design. Perfectly situated in the heart of the Canadian Rockies, this 4,000+ sq. ft. residence offers unparalleled comfort, convenience, and privacy, making it an extraordinary place to call home. Designed for those who appreciate the finest details, this three-bedroom, four-bathroom home boasts elevated finishings throughout. The master kitchen is a chef's dream, featuring premium appliances, bespoke cabinetry, and a seamless flow into the open-concept living area. High ceilings and expansive floor-to-ceiling windows invite an abundance of natural light while framing breathtaking mountain views. For ease of access, a private elevator connects all levels, ensuring effortless movement throughout the home. Thoughtfully designed spaces include a dedicated gym area (The developer offers the option to convert the lower-level recreation room into an additional bedroom) and a media room for cozy nights in. The double attached garage offers ample storage, while superior craftsmanship ensures this home is both striking and functional. A rare blend of modern elegance and mountain serenity, 288 Three Sisters Drive redefines alpine luxury. Experience a lifestyle where comfort meets sophistication—Welcome home.

Built in 2025



Essential Information

| | |
|----------------|-----------------------------|
| MLS® # | A2200436 |
| Price | \$2,996,700 |
| Bedrooms | 4 |
| Bathrooms | 4.00 |
| Full Baths | 2 |
| Half Baths | 2 |
| Square Footage | 3,035 |
| Acres | 0.08 |
| Year Built | 2025 |
| Type | Residential |
| Sub-Type | Semi Detached |
| Style | Side by Side, 4 Level Split |
| Status | Active |

Community Information

| | |
|-------------|----------------------------|
| Address | A, 288 Three Sisters Drive |
| Subdivision | Hospital Hill |
| City | Canmore |
| County | Bighorn No. 8, M.D. of |
| Province | Alberta |
| Postal Code | T1W2M8 |

Amenities

| | |
|----------------|----------------------------------|
| Parking Spaces | 4 |
| Parking | Double Garage Attached, Driveway |
| # of Garages | 2 |

Interior

| | |
|-------------------|--|
| Interior Features | Beamed Ceilings, Bookcases, Breakfast Bar, Built-in Features, Chandelier, Closet Organizers, Double Vanity, Dry Bar, Elevator, High Ceilings, Kitchen Island, Open Floorplan, Pantry, Recessed Lighting, Separate Entrance, Soaking Tub, Stone Counters, Storage, Walk-In Closet(s), Wet Bar |
| Appliances | Built-In Oven, Dishwasher, Dryer, Gas Cooktop, Microwave, Microwave Hood Fan, Range Hood, Refrigerator, Washer, Wine Refrigerator |
| Heating | In Floor, Electric, Forced Air, Natural Gas |
| Cooling | None |
| Fireplace | Yes |

| | |
|-----------------|---|
| # of Fireplaces | 1 |
| Fireplaces | Gas, Living Room, Double Sided, Free Standing |
| Has Basement | Yes |
| Basement | Finished, Full |

Exterior

| | |
|-------------------|---|
| Exterior Features | Balcony, Private Entrance, Private Yard |
| Lot Description | Views |
| Roof | Metal |
| Construction | Wood Frame |
| Foundation | Poured Concrete |

Additional Information

| | |
|----------------|-----------------|
| Date Listed | March 8th, 2025 |
| Days on Market | 66 |
| Zoning | R2 |

Listing Details

| | |
|----------------|--------------------------|
| Listing Office | CENTURY 21 NORDIC REALTY |
|----------------|--------------------------|

Data is supplied by Pillar 9â„¢ MLS® System. Pillar 9â„¢ is the owner of the copyright in its MLS® System. Data is deemed reliable but is not guaranteed accurate by Pillar 9â„¢. The trademarks MLS®, Multiple Listing Service® and the associated logos are owned by The Canadian Real Estate Association (CREA) and identify the quality of services provided by real estate professionals who are members of CREA. Used under license.