

# \$89,000 - 752 Township, High Prairie

MLS® #A2193789

**\$89,000**

0 Bedroom, 0.00 Bathroom,  
Land on 6.82 Acres

NONE, High Prairie, Alberta

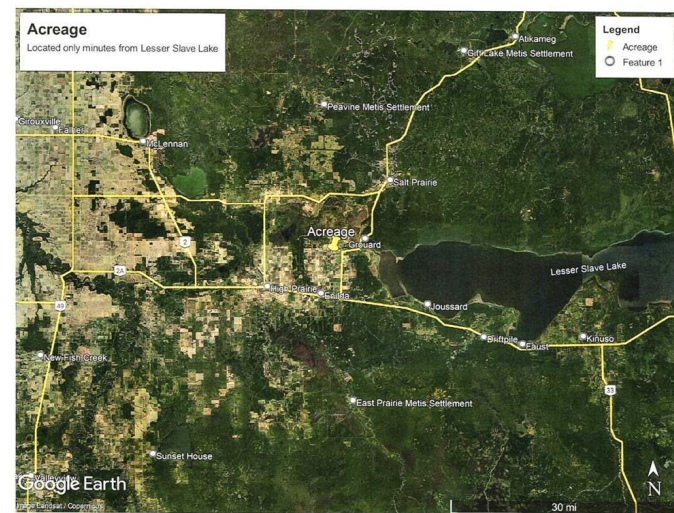
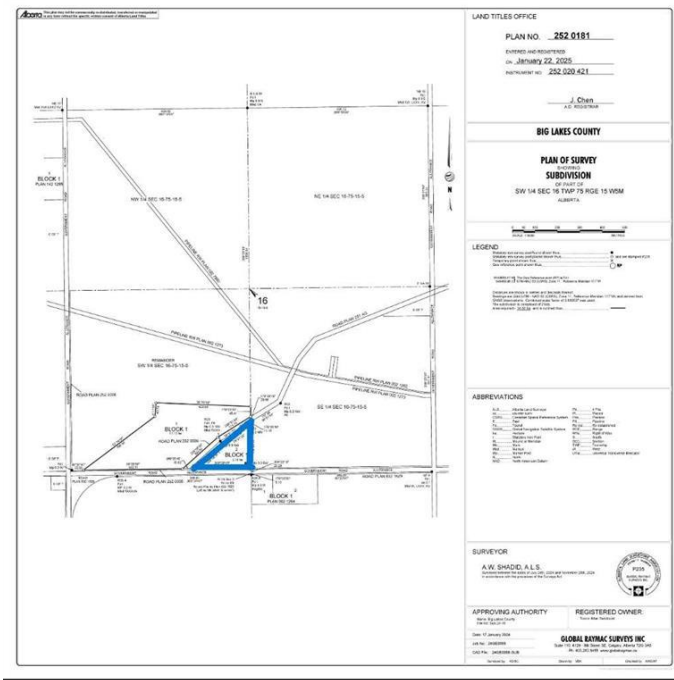
Acreage for Sale! This beautiful piece of vacant land is located in a well established farming community with high grade road access and a short drive to Lesser Slave Lake for all your recreation,fishing,hunting,hiking,boating needs. Featuring 6.82 acres with a small creek, 400 newly planted spruce trees and a wild cherry tree. Power line runs through the property helping to reduce the cost of development and gas and municipal water are at the property line. Great location to build your dream home and enjoy the outdoors. Call today for your viewing!

## Essential Information

|           |                  |
|-----------|------------------|
| MLS® #    | A2193789         |
| Price     | \$89,000         |
| Bathrooms | 0.00             |
| Acres     | 6.82             |
| Type      | Land             |
| Sub-Type  | Residential Land |
| Status    | Active           |

## Community Information

|             |                  |
|-------------|------------------|
| Address     | 752 Township     |
| Subdivision | NONE             |
| City        | High Prairie     |
| County      | Big Lakes County |
| Province    | Alberta          |



Postal Code            T0G 1E0

**Exterior**

Exterior Features    Private Yard

**Additional Information**

Date Listed            February 10th, 2025

Days on Market       98

Zoning                 Country Residential

**Listing Details**

Listing Office           Royal LePage P.V.R. Realty

Data is supplied by Pillar 9â„¸ MLSÂ® System. Pillar 9â„¸ is the owner of the copyright in its MLSÂ® System. Data is deemed reliable but is not guaranteed accurate by Pillar 9â„¸. The trademarks MLSÂ®, Multiple Listing ServiceÂ® and the associated logos are owned by The Canadian Real Estate Association (CREA) and identify the quality of services provided by real estate professionals who are members of CREA. Used under license.