

# \$79,900 - Twp 732, Rural Grande Prairie No. 1, County of

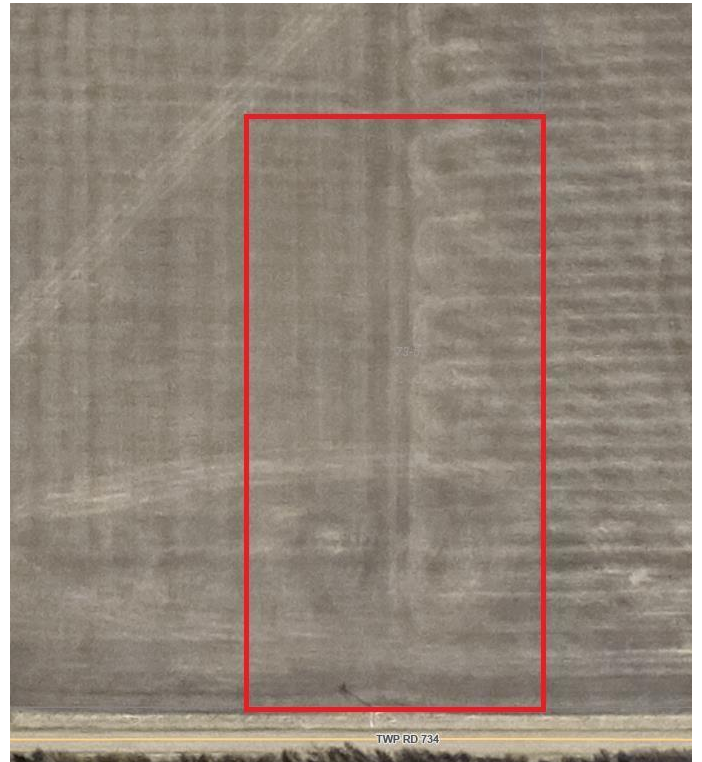
MLS® #A2192096

**\$79,900**

0 Bedroom, 0.00 Bathroom,  
Land on 4.90 Acres

NONE, Rural Grande Prairie No. 1, County of,  
Alberta

Nice piece of residential land available close to La Glace. This 4.9+ acre parcel is zoned CR-5 giving you a variety of land use options. The affordable price is being offered to allow you financial room to develop and finish the land to your liking. La Glace is a great community and a great area to raise your kids. Another benefit is that you are really close to pavement. There are some good water wells in the area and services are close by.

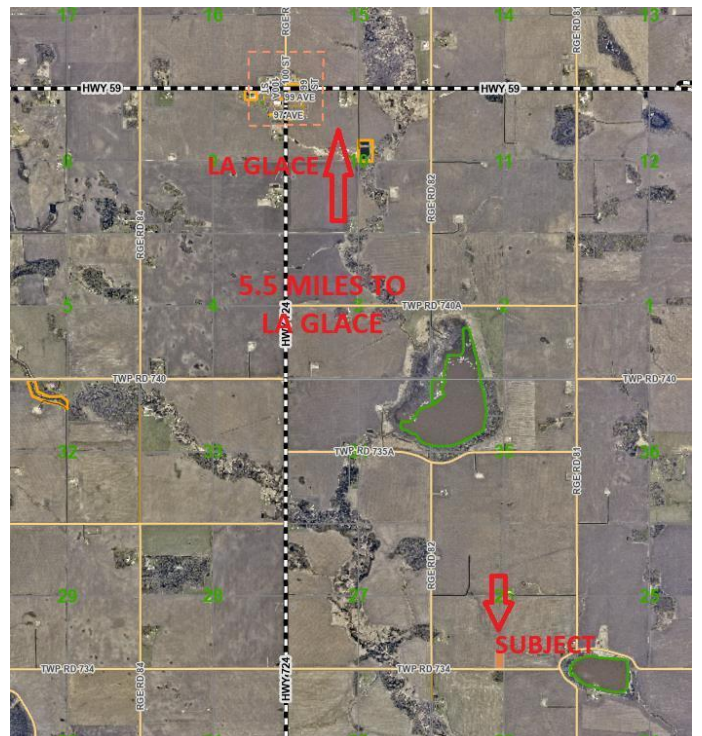


## Essential Information

|           |                  |
|-----------|------------------|
| MLS® #    | A2192096         |
| Price     | \$79,900         |
| Bathrooms | 0.00             |
| Acres     | 4.90             |
| Type      | Land             |
| Sub-Type  | Residential Land |
| Status    | Active           |

## Community Information

|             |                                       |
|-------------|---------------------------------------|
| Address     | Twp 732                               |
| Subdivision | NONE                                  |
| City        | Rural Grande Prairie No. 1, County of |
| County      | Grande Prairie No. 1, County of       |
| Province    | Alberta                               |
| Postal Code | T0H 3C0                               |



**Additional Information**

|                |                    |
|----------------|--------------------|
| Date Listed    | February 3rd, 2025 |
| Days on Market | 105                |
| Zoning         | CR5                |

**Listing Details**

|                |                              |
|----------------|------------------------------|
| Listing Office | Grassroots Realty Group Ltd. |
|----------------|------------------------------|

Data is supplied by Pillar 9â„¸ MLSÂ® System. Pillar 9â„¸ is the owner of the copyright in its MLSÂ® System. Data is deemed reliable but is not guaranteed accurate by Pillar 9â„¸. The trademarks MLSÂ®, Multiple Listing ServiceÂ® and the associated logos are owned by The Canadian Real Estate Association (CREA) and identify the quality of services provided by real estate professionals who are members of CREA. Used under license.