

# \$1,590,000 - 5710 Taylor Way, Rural Grande Prairie No. 1, County of

MLS® #A2188251

**\$1,590,000**

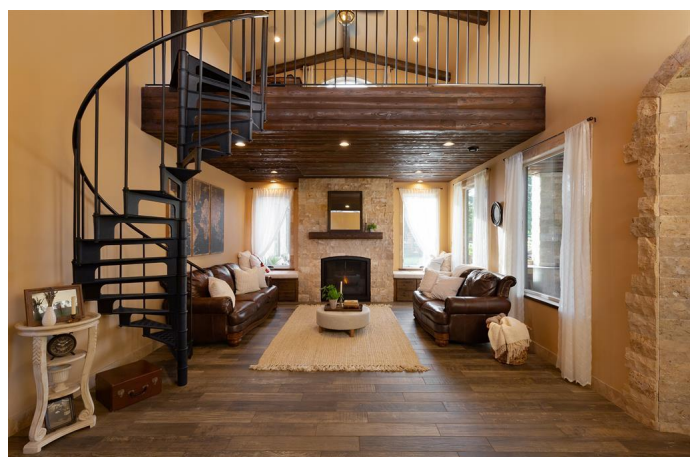
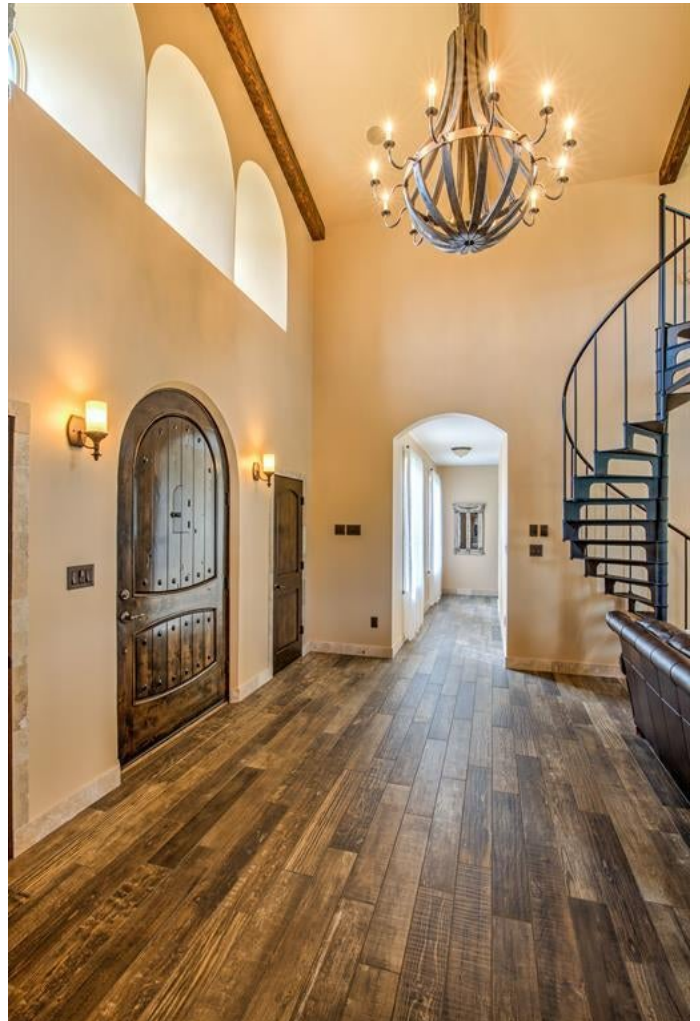
4 Bedroom, 3.00 Bathroom, 3,913 sqft  
Residential on 1.03 Acres

Taylor Estates, Rural Grande Prairie No. 1,  
County of, Alberta

Inspired by the old-world charm of Tuscany, this modified bungalow home is one of a kind. This home sits on a quiet one-acre lot and is located in the peaceful neighborhood of Taylor Estates only minutes from Grande Prairie. Country living with all the benefits of living in the city. Mature trees and a fully landscaped yard offer a park-like setting. A private walking trail, playground, garden, firepit, covered patio, and lots of outdoor seating make this yard great for entertaining. Distressed wood and chiselled stone are used throughout the exterior as well as the interior of the home, bringing the outside in. The home is very light and bright with many windows to enjoy the beautiful outdoor views. High-efficiency building materials like spray foam insulation and in-floor heating make for maximum comfort. With over 3900 sq/ft of livable space, wheelchair-friendly access, 4 bedrooms, 2 1/2 baths, built-in speakers throughout, a heated 6-car garage and so much more. Intricate details and authentic materials encapsulate a timeless European feel in this cozy family home. BRAND NEW CENTRAL A/C INSTALLED IN AUGUST 2024!

Built in 2014

## Essential Information



|                |                                  |
|----------------|----------------------------------|
| MLS® #         | A2188251                         |
| Price          | \$1,590,000                      |
| Bedrooms       | 4                                |
| Bathrooms      | 3.00                             |
| Full Baths     | 2                                |
| Half Baths     | 1                                |
| Square Footage | 3,913                            |
| Acres          | 1.03                             |
| Year Built     | 2014                             |
| Type           | Residential                      |
| Sub-Type       | Detached                         |
| Style          | Acreage with Residence, Bungalow |
| Status         | Active                           |

### Community Information

|             |                                       |
|-------------|---------------------------------------|
| Address     | 5710 Taylor Way                       |
| Subdivision | Taylor Estates                        |
| City        | Rural Grande Prairie No. 1, County of |
| County      | Grande Prairie No. 1, County of       |
| Province    | Alberta                               |
| Postal Code | T8W 0H3                               |

### Amenities

|                |  |
|----------------|--|
| Parking Spaces | 10   |
| Parking        | RV Access/Parking, Concrete Driveway, Garage Door Opener, Heated Garage, Quad or More Attached, Workshop in Garage |
| # of Garages   | 6  |

### Interior

|                   |  |
|-------------------|--|
| Interior Features | Built-in Features, Ceiling Fan(s), High Ceilings, Pantry, Walk-In Closet(s), Chandelier, Granite Counters, Wired for Sound |
| Appliances        | Central Air Conditioner, Dishwasher, Dryer, Garage Control(s), Gas Stove, Refrigerator, Washer, Window Coverings           |
| Heating           | Boiler, In Floor   |
| Cooling           | None   |
| Fireplace         | Yes  |
| # of Fireplaces   | 1  |
| Fireplaces        | Gas  |
| Basement          | None   |

**Exterior**

|                   |  |
|-------------------|--|
| Exterior Features | Fire Pit, Garden, Built-in Barbecue, Courtyard   |
| Lot Description   | Back Yard, Fruit Trees/Shrub(s), Garden, Landscaped, Lawn, Many Trees, Private, Front Yard |
| Roof              | Asphalt Shingle  |
| Construction      | Stone  |
| Foundation        | ICF Block  |

**Additional Information**

|                |                    |
|----------------|--------------------|
| Date Listed    | January 16th, 2025 |
| Days on Market | 121                |
| Zoning         | RE                 |

**Listing Details**

|                |                       |
|----------------|-----------------------|
| Listing Office | RE/MAX Grande Prairie |
|----------------|-----------------------|

Data is supplied by Pillar 9â„¢ MLS® System. Pillar 9â„¢ is the owner of the copyright in its MLS® System. Data is deemed reliable but is not guaranteed accurate by Pillar 9â„¢. The trademarks MLS®, Multiple Listing Service® and the associated logos are owned by The Canadian Real Estate Association (CREA) and identify the quality of services provided by real estate professionals who are members of CREA. Used under license.