

\$635,000 - 54128 Range Road 274, Rural Parkland County

MLS® #A2175847

\$635,000

0 Bedroom, 0.00 Bathroom,
Land on 62.98 Acres

NONE, Rural Parkland County, Alberta

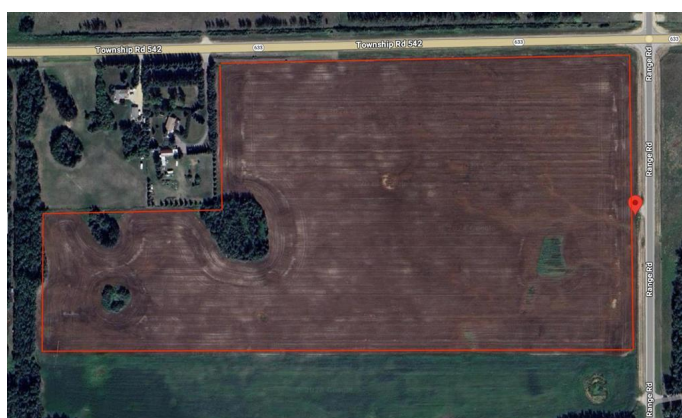
Discover an exceptional opportunity with this expansive 62.98 +/- acres property, perfect for those looking to build their dream home or make a long term investment. Boasting breathtaking views of Edmonton from various vantage points, this land offers endless possibilities. Zoned for country residential and approved for future subdivision, you can develop to your vision's full potential. Enjoy the convenience of fully paved roads and a location just 10 minutes from Spruce Grove. Whether you're envisioning a private estate or planning a subdivision, this property combines the best of scenic beauty and prime location.

Essential Information

MLS® #	A2175847
Price	\$635,000
Bathrooms	0.00
Acres	62.98
Type	Land
Sub-Type	Residential Land
Status	Active

Community Information

Address	54128 Range Road 274
Subdivision	NONE
City	Rural Parkland County



County	Parkland County
Province	Alberta
Postal Code	T7X3S5

Amenities

Utilities	Electricity Not Available, Natural Gas Not Available, Phone Not Available, Sewer Not Available
-----------	--

Additional Information

Date Listed	November 14th, 2024
Days on Market	181
Zoning	CR

Listing Details

Listing Office	eXp Realty
----------------	------------

Data is supplied by Pillar 9â„¢ MLS® System. Pillar 9â„¢ is the owner of the copyright in its MLS® System. Data is deemed reliable but is not guaranteed accurate by Pillar 9â„¢. The trademarks MLS®, Multiple Listing Service® and the associated logos are owned by The Canadian Real Estate Association (CREA) and identify the quality of services provided by real estate professionals who are members of CREA. Used under license.