

\$752,450 - 117, 1818 Mountain Avenue, Canmore

MLS® #A2175082

\$752,450

2 Bedroom, 2.00 Bathroom, 843 sqft
Residential on 0.00 Acres

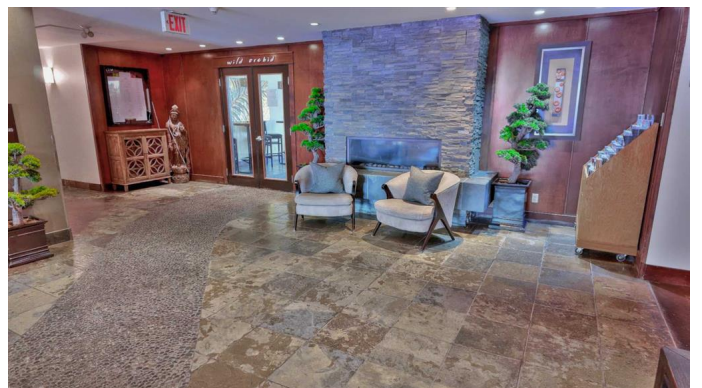
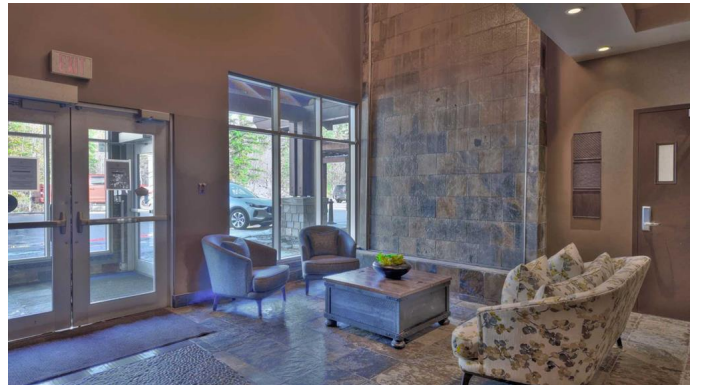
Bow Valley Trail, Canmore, Alberta

Discover exceptional mountain-resort livingâ€™ and income potentialâ€™ in this spacious two-bedroom, two-bath condo at Silvercreek Lodge. Nestled just walking distance to the vibrant Downtown, this professionally managed suite offers the ideal blend of alpine charm, seamless turnkey operation and short-term-rental management through Waymarker Hospitality.

Step into the open living and dining area, where the flooring stretches beneath a custom slate-faced gas fireplace and wall-mounted TV. Oversized windows and a sliding glass door flood the space with natural light. Enjoy morning coffee or evening cocktails on your private deckâ€™ complete with outdoor seatingâ€™ while soaking in tranquil mountain views.

Adjacent, the gourmet kitchen stands ready for any culinary endeavor. Rich wood cabinetry, sleek stainless-steel appliances and under-cabinet lighting highlight a mosaic-tile backsplash. A substantial granite island provides seating for four, making meal prep and casual entertaining effortless. An integrated breakfast bar invites guests to gather, while ample counter space and drawers ensure both style and function.

Retreat to the bedrooms, where plush carpeting and hotel-grade linens on a king-sized bed guarantee restful nights. The



en-suite bath dazzles with dual vessel sinks set on a granite countertop, a glass-enclosed shower and a deep slate-tiled soaking tub—complete with a pebble-inlay floor and built-in bath amenities. The second bedroom, ideal for family or visiting guests, boasts a comfortable queen bed, generous closet space and easy access to the full guest bath, appointed with modern fixtures and a tub-shower combination.

Ownership includes heated underground parking stall ensuring convenience and security. As part of Silvercreek Lodge, you™ll enjoy on-site amenities designed to enhance every stay: relax at the Bodhi Wellness spa, dine at the elegant Orchid restaurant, plunge into outdoor hot tubs or invigorate your routine in the fitness center and steam room.

Professionally managed by Waymarker Hospitality, this suite comes fully prepared for short-term rental success. From marketing and reservations to housekeeping, maintenance and guest services, Waymarker handles every detail on your behalf—maximizing revenue potential and eliminating operational hassle. Whether you seek a personal mountain retreat, a reliable income stream, or both, this Silvercreek Lodge condo delivers effortless alpine living where every detail elevates your mountain-resort experience.

Built in 2008

Essential Information

MLS® #	A2175082
Price	\$752,450
Bedrooms	2
Bathrooms	2.00
Full Baths	2

Square Footage	843
Acres	0.00
Year Built	2008
Type	Residential
Sub-Type	Apartment
Style	Low-Rise(1-4)
Status	Active

Community Information

Address	117, 1818 Mountain Avenue
Subdivision	Bow Valley Trail
City	Canmore
County	Bighorn No. 8, M.D. of
Province	Alberta
Postal Code	T1W3M3

Amenities

Amenities	Elevator(s), Fitness Center, Picnic Area, Spa/Hot Tub
Parking Spaces	1
Parking	Parkade, Underground

Interior

Interior Features	Kitchen Island, Soaking Tub
Appliances	Dishwasher, Electric Range, Refrigerator, Washer/Dryer, Microwave Hood Fan
Heating	Radiant
Cooling	Central Air
Fireplace	Yes
# of Fireplaces	1
Fireplaces	Living Room, Electric
# of Stories	4

Exterior

Exterior Features	None, Other
Construction	Wood Frame
Foundation	Poured Concrete

Additional Information

Date Listed	October 23rd, 2024
-------------	--------------------

Days on Market	203
Zoning	BVT-G

Listing Details

Listing Office	CENTURY 21 NORDIC REALTY
----------------	--------------------------

Data is supplied by Pillar 9â„¢ MLS® System. Pillar 9â„¢ is the owner of the copyright in its MLS® System. Data is deemed reliable but is not guaranteed accurate by Pillar 9â„¢. The trademarks MLS®, Multiple Listing Service® and the associated logos are owned by The Canadian Real Estate Association (CREA) and identify the quality of services provided by real estate professionals who are members of CREA. Used under license.