

\$4,900,000 - Township Road 262 Range Road 283, Rural Rocky View County

MLS® #A2170858

\$4,900,000

0 Bedroom, 0.00 Bathroom,
Land on 139.50 Acres

NONE, Rural Rocky View County, Alberta

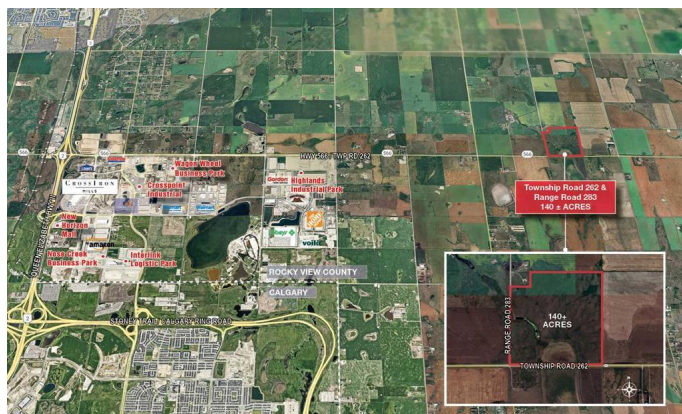
The subject site is located east of Balzac, Rocky View County, AB, in an area that has seen significant growth and development in recent years. About a 20 minute drive from Airdrie, AB and 18 minutes from Calgary, AB. Close proximity to some major commercial developments, including CrossIron Mills shopping centre, various industrial and logistics parks and retail developments, offering future potential for various types of developments if the parcel is rezoned. Quick and easy access to CrossIron Drive, Dwight McClellan/Metis Trail, Stoney Trail (Calgary ring road) and QE 2, as well as the Calgary International Airport.

Essential Information

MLS® #	A2170858
Price	\$4,900,000
Bathrooms	0.00
Acres	139.50
Type	Land
Sub-Type	Residential Land
Status	Active

Community Information

Address	Township Road 262 Range Road 283
Subdivision	NONE
City	Rural Rocky View County



County	Rocky View County
Province	Alberta
Postal Code	T0M 0T0

Additional Information

Date Listed	October 4th, 2024
Days on Market	218
Zoning	A-GEN

Listing Details

Listing Office	MaxWell Canyon Creek
----------------	----------------------

Data is supplied by Pillar 9â„¢ MLSÂ® System. Pillar 9â„¢ is the owner of the copyright in its MLSÂ® System. Data is deemed reliable but is not guaranteed accurate by Pillar 9â„¢. The trademarks MLSÂ®, Multiple Listing ServiceÂ® and the associated logos are owned by The Canadian Real Estate Association (CREA) and identify the quality of services provided by real estate professionals who are members of CREA. Used under license.