

\$32,500,000 - Scott Lake Ranch, Rural Rocky View County

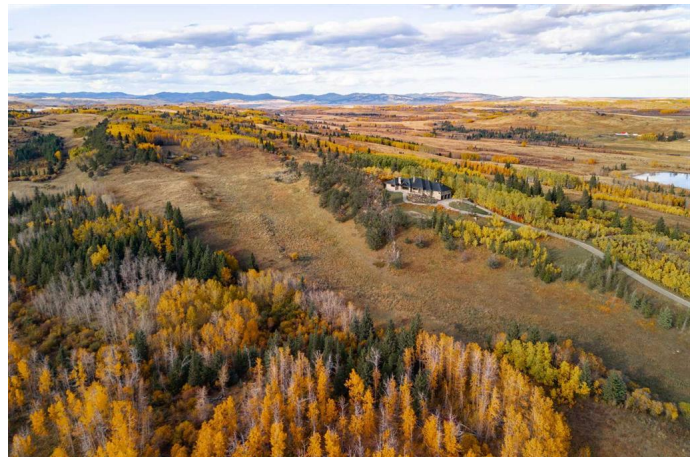
MLS® #A2148503

\$32,500,000

0 Bedroom, 0.00 Bathroom, 4,849 sqft
Agri-Business on 3010.80 Acres

NONE, Rural Rocky View County, Alberta

In the rugged heart of Alberta, just a stone's throw from the bustling city of Calgary, Scott Lake Ranch emerges as a testament to untamed beauty and frontier spirit. Spanning over 3,000 acres, this legendary property stands with unyielding grace along the Trans-Canada Highway, offering a gateway to a world where the wild, rolling plains converge with the whispering pines of the Rocky Mountains. Within this expansive landscape lie 25 legal parcels totaling 3,010.8 acres, strategically positioned with direct access to the Trans-Canada Highway. Guided by the Scott Lake Area Structure Plan (ASP), parcels of the ranch are poised for both commercial and residential development—a testament to visionary opportunity in the heart of the West. Amidst this vast and captivating terrain stands a 5,000 sq. ft. estate home—a haven of elegance amidst the wilderness. Here, vistas stretch as far as the eye can see, each horizon telling a tale of boundless adventure and timeless beauty. Nestled within a secluded 1/4 section of the property, the estate home at Scott Lake Ranch exudes timeless elegance and rugged charm. Crafted from locally sourced stone, its sturdy facade harmonizes effortlessly with the surrounding natural landscape, offering a picturesque blend of luxury and wilderness. Designed to complement the terrain, the home's architecture reflects a deep respect for



the environment, while inside, spacious living areas and modern amenities ensure comfort amid Alberta's untamed beauty. An additional home for a caretaker ensures meticulous care of the ranch, maintaining its pristine condition and attending to every aspect of daily life with utmost dedication.

For over six decades, Scott Lake Ranch has been a beacon of stewardship and sustainability, expertly managed for cattle and forage operations. This rich heritage is woven into the fabric of the land, where each blade of grass carries whispers of the past and promises of a future shaped by generations of dedication. Scott Lake Ranch is more than just property; it is a legacy and a realm of infinite possibilities. With commercial and residential zoning and significant potential for conservation initiatives, it offers a rare chance to claim a piece of Alberta's soul. Here, amidst the splendor of nature and the spirit of the cowboy, you can forge a legacy as enduring as the land itself. Contact us today to arrange your private tour and experience firsthand the allure of owning a generational property that seamlessly blends natural beauty, heritage, and limitless potential in the heart of the West.

Essential Information

| | |
|----------------|---------------|
| MLS® # | A2148503 |
| Price | \$32,500,000 |
| Bathrooms | 0.00 |
| Square Footage | 4,849 |
| Acres | 3,010.80 |
| Type | Agri-Business |
| Sub-Type | Agriculture |
| Style | Bungalow |
| Status | Active |

Community Information

| | |
|-------------|-------------------------|
| Address | Scott Lake Ranch |
| Subdivision | NONE |
| City | Rural Rocky View County |
| County | Rocky View County |
| Province | Alberta |
| Postal Code | T3Z 2L4 |

Amenities

| | |
|--------------|------------------------|
| Parking | Triple Garage Attached |
| # of Garages | 3 |

Exterior

| | |
|--------------|-------|
| Construction | Stone |
|--------------|-------|

Additional Information

| | |
|----------------|-------------------------|
| Date Listed | July 11th, 2024 |
| Days on Market | 306 |
| Zoning | A-GEN, SLCR, AC, SL-HWY |

Listing Details

| | |
|----------------|---------------------------------------|
| Listing Office | Sotheby's International Realty Canada |
|----------------|---------------------------------------|

Data is supplied by Pillar 9â„¢ MLSÂ® System. Pillar 9â„¢ is the owner of the copyright in its MLSÂ® System. Data is deemed reliable but is not guaranteed accurate by Pillar 9â„¢. The trademarks MLSÂ®, Multiple Listing ServiceÂ® and the associated logos are owned by The Canadian Real Estate Association (CREA) and identify the quality of services provided by real estate professionals who are members of CREA. Used under license.