

# \$229,999 - 11405 103st W, Peace River

MLS® #A2147590

**\$229,999**

5 Bedroom, 2.00 Bathroom, 1,248 sqft  
Residential on 2.01 Acres

South End, Peace River, Alberta

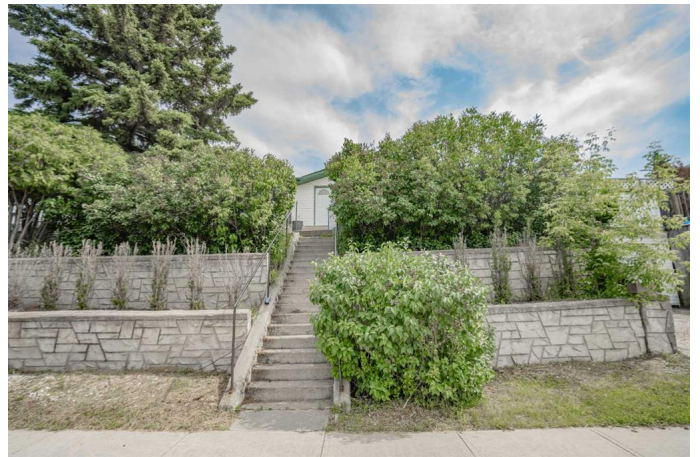
This 1248 sqft bungalow with a fully finished basement is located on the top end of south Peace River. The 5 bed 2 bath home holds a large living room with seamless transition onto the large dinning room and even larger kitchen. Also upstairs there is 3 bedrooms, a bathroom and a laundry room by the backdoor! Downstairs hold 2 very larger bedrooms and one of them has a large full ensuite. Also downstairs there is access to you double car garage. Outside you have a 2 tiered backyard and a wrap around deck above the garage. Don't miss out on this great property! Call today!

Built in 1970

## Essential Information

MLS® #	A2147590
Price	\$229,999
Bedrooms	5
Bathrooms	2.00
Full Baths	2
Square Footage	1,248
Acres	2.01
Year Built	1970
Type	Residential
Sub-Type	Detached
Style	Bungalow
Status	Active

## Community Information



Address	11405 103st W
Subdivision	South End
City	Peace River
County	Peace No. 135, M.D. of
Province	Alberta
Postal Code	T8S1M2

### Amenities

Parking Spaces	4
Parking	Double Garage Attached
# of Garages	2

### Interior

Interior Features	See Remarks
Appliances	Dishwasher, Gas Stove, Microwave, Refrigerator, Washer/Dryer
Heating	Forced Air
Cooling	None
Has Basement	Yes
Basement	Finished, Full

### Exterior

Exterior Features	Private Yard
Lot Description	Back Yard
Roof	Asphalt Shingle
Construction	Wood Frame
Foundation	Poured Concrete

### Additional Information

Date Listed	July 7th, 2024
Days on Market	310
Zoning	R1-A

### Listing Details

Listing Office	Grassroots Realty Group Ltd.
----------------	------------------------------

Data is supplied by Pillar 9â„¢ MLSÂ® System. Pillar 9â„¢ is the owner of the copyright in its MLSÂ® System. Data is deemed reliable but is not guaranteed accurate by Pillar 9â„¢. The trademarks MLSÂ®, Multiple Listing ServiceÂ® and the associated logos are owned by The Canadian Real Estate Association (CREA) and identify the quality of services provided by real estate professionals who are members of CREA. Used under license.